

ePMP™ 1000 Hotspot

REACHING THE EDGE.

The reliability of ePMP™ radio, combined with the power of service-provider-grade WLAN software, makes this easy-to-deploy single-band access point the choice for government, utility and other deployments that need to scale over time.

Cloud Management: backed by Cambium's *cnMaestro™* cloud manager offering end to end visibility of the network and customer devices

- Single pane of management for outdoor hotspot and PTP*, PMP*, ePMP™
- Stateful alarms and dashboard views
- Multiple management options available including cloud-based, SNMP and an enriched set of RESTful interfaces

End-to-end Troubleshooting: Single dashboard view and rich statistics ensure rapid root cause detection and issue resolution

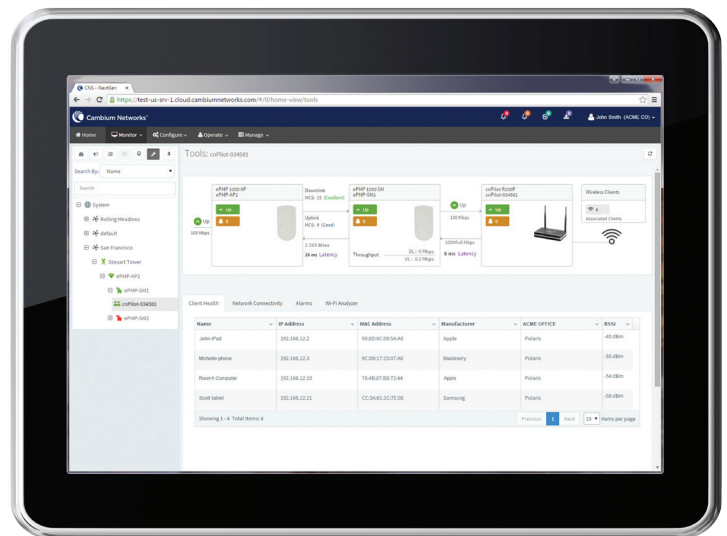
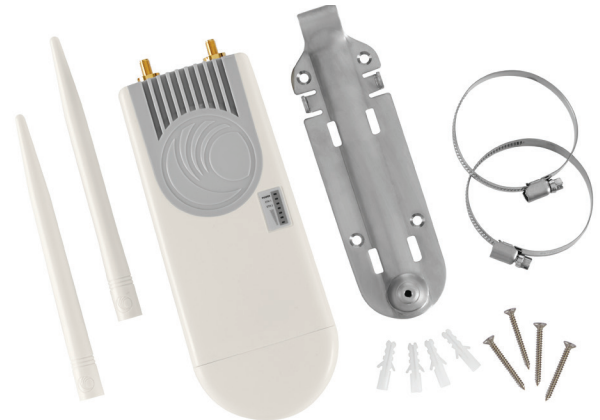
- One-click functionality reveals the health of all network nodes related to the problem area
- Troubleshoot end user client connectivity on any WLAN from a single console
- No truck roll required to debug wired or wireless connectivity configurations

Network Monetization:

- Integration with 3rd party external guest access solutions
- Onboard guest access portal for simple deployments
- Cambium PoE out to support 2nd hotspot or ePMP™ / PMP subscriber module

Security:

- Support WPA2 Enterprise and WPA2 PSK
- Secure connection over HTTPS back to the cloud for management



cnMaestro™ Dashboard

KEY FEATURES:

- 802.11n 2x2 MIMO
- 8 SSIDs supporting 128 concurrent users
- Cloud managed with no on-site controller required
- On-board captive portal
- Rate limiting per SSID and client
- Fast roaming across access points (AP)
- Auto channel selection for allocation of wireless spectrum

*Some of the features listed will be roadmap available

WLAN ACCESS POINT SPECIFICATIONS

Types of Access Points (APs)	Single band (SB) 2.4 or 5 GHz APs ¹
Frequency Bands Across SKUs	IEEE 802.11n: 2.4 – 2.484 GHz / 5.15 – 5.85 GHz / IEEE 802.11a: 5.15 – 5.875 GHz / IEEE 802.11g: 2.4 – 2.484 GHz
Stream	2x2 MIMO
Range	180 m (600 Ft) Extended ranges via 3rd party high gain antennas
Concurrent Clients	128
Max Throughput	300 Mbps
SSID	8
Antenna	Yes. RPSMA dipole (default)
Antenna Gain	4.5 ±1 dBi (2.4 GHz) 5.5 ±1 dBi (5 GHz)
Polarization	Vertical
Coverage Angles	Omni (360°)
Ethernet Ports	Two (2) x 10/100
PoE out	Yes. Cambium PoE out with current limiting
Power Supply	Cambium PoE
Power Consumed	5W (typical)/7W (max)
Dimensions (cm)	8.9 x 21 x 3.5
Weight	< 0.5 Kg
Temperature	-30°C to +55°C
Certification	IP55
Tx Power	30 dBm

WiFi FEATURES

MANAGED MODE	Access point can be deployed at large scale in feature rich <i>cn</i> Maestro controller managed mode
AUTONOMOUS MODE	Capable of operating autonomously when connection to <i>cn</i> Maestro controller is lost
SECURE WLAN	WPA-TKIP, WPA2 AES
DEPLOYMENT MODEL	Stand-alone APs or Cloud Managed WiFi APs
HOTSPOT CAPTIVE PORTAL	Stand-alone mode AP based hotspot server. Also supports hotspot redirection to a 3rd party Hotspot server
AUTHENTICATION	Secure Web page, RADIUS based 802.1x including EAP-SIM/AKA, AP-PEAP, EAP-TTLS, and EAP-TLS
SCHEDULED SSID	Turns SSID ON/OFF on a daily/weekly/time of day basis
USER DATA LIMITING	Rate limiting of client traffic: Cap utilization based on data rates, max data rates and time interval
SUBSCRIBER QOS	WMM
CLIENT ISOLATION	Yes
FAST ROAMING	Controller-less fast roaming supported
AUTOMATIC CHANNEL SELECTION	Yes
NAT (NETWORK ADDRESS TRANSLATION)	Yes
DHCP SERVER	Yes
FIREWALL	Yes

MANAGEMENT FEATURES

GUI	Simple intuitive web browser enabled tabbed GUI to simplify complex network views
COMMON FRAMEWORK	One-single-pane-of-glass from which to manage both the Point-to-point, Point-to-multipoint and Cambium PMP WLAN solutions
ON-BOARDING	Secure large scale bulk onboarding Zero touch bulk configuration and provisioning
DEVICE INVENTORY	Inventory tracking and reporting
MONITORING	Insightful status monitoring; rich visibility to device lifecycle Alarms and events management – Critical/Major/Minor Statistics graphs and table display Alarm traffic light display
KEY STATS MONITORING	Near real time stats monitoring, aggregation and reporting
SOFTWARE UPGRADE	Bulk upgrade with ability to upgrade 100+ managed devices (such as WLAN APs) at a time, with upgrade status report

Ordering Information

ePMP™ 1000 hotspot 802.11n 2.4 GHz or 5GHz WiFi AP with dipole Antennas, & Mounting bracket
Available for: C024095H021A (2.4 GHz, FCC, ROW, US Cord) and C024095H221A (2.4 GHz, EU, ROW, EU cord), C005095H023A (5 GHz EU), C005095H122A (5 GHz,FCC), C005095H021A (5GHz, ROW, US Cord), and C005095H221A (5 GHz, ROW, EU cord)

¹The hardware specifications are based on ePMP 1000 Connectorized Radio

© 2015 Cambium Networks Ltd. All rights reserved.

CN ePMP™ 1000 Hotspot SS 08242015

SICE DISTRIBUTORE UFFICIALE: www.sicetelecom.it