



# C6TC

## Full-Room Coverage, Motion-Tracking Master

A Full HD 1080p Wi-Fi pan-tilt camera provides full-room coverage.

### Key Features

**Full  
HD**

1080p



Pan and Tilt. Up to 340° horizontal and 90° vertical.



Supports smart motion tracking and recording



Supports MicroSD card slot, up to 128GB



Smart lens shutter for privacy protection



Two-way audio



True Day/Night camera with auto-switching. Infrared night vision up to 10 meters.



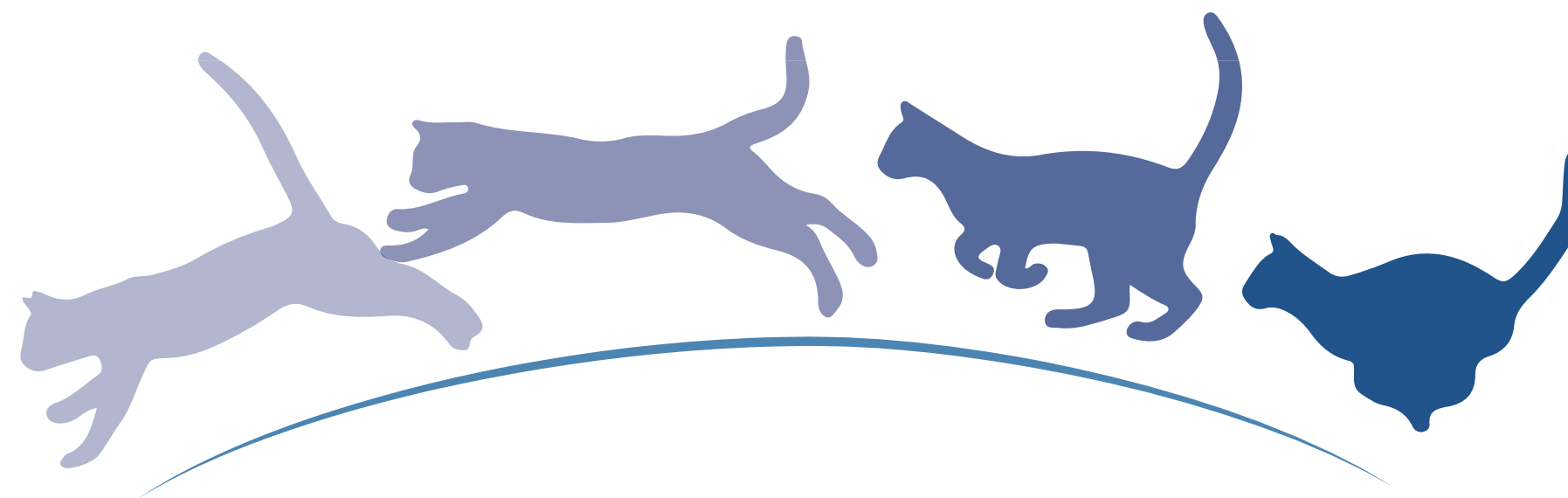
## 360° horizontal panorama

The C6TC includes an expansive field-of-view coverage with 340° horizontal, 80° vertical upward and 10° vertical downward rotations.



## Smart tracking

Upon detection of movement, the C6TC automatically captures and tracks the motion while delivering alerts and video recordings in real time.



## Privacy shutter

---

The thoughtfully-designed privacy shutter allows you to turn the lens off whenever you need privacy.



## Night vision

---

The C6TC is equipped with two powerful infrared lights for night vision up to 10 meters (depending on environment).



## Two-way audio

---

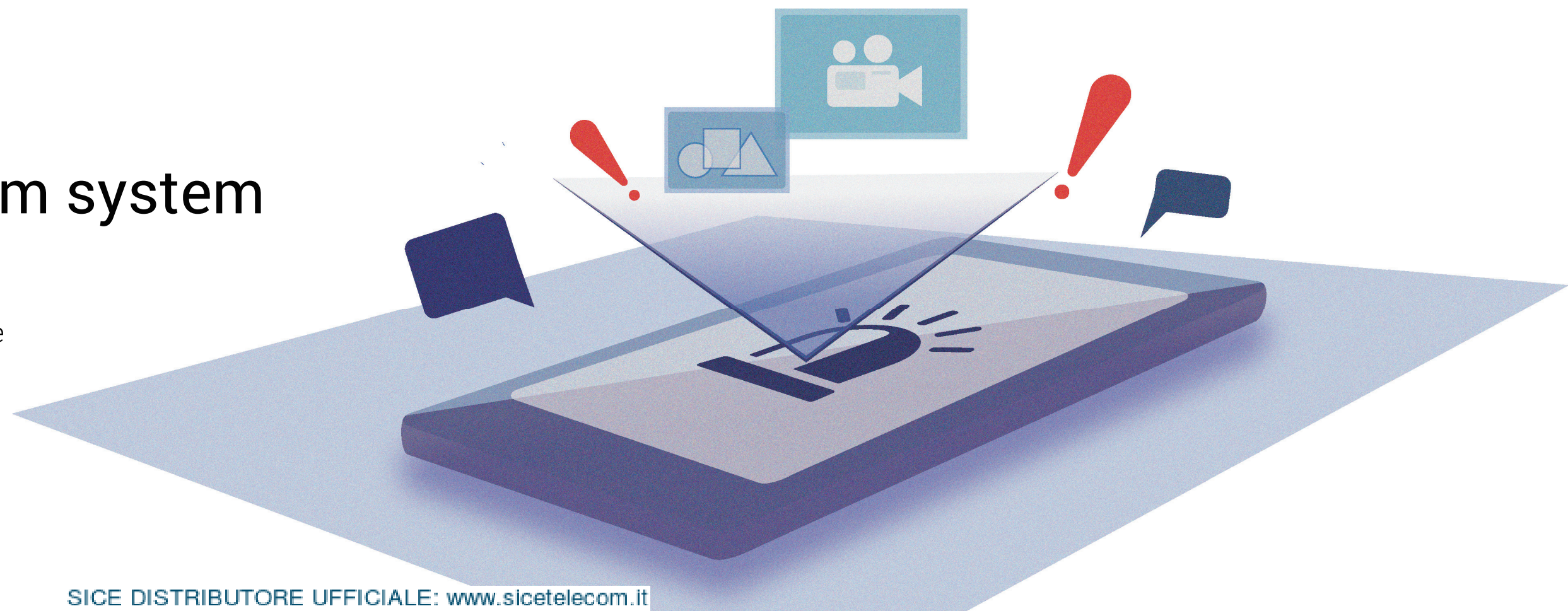
The built-in microphone and HiFi quality speaker enable two-way talk via the camera and your phone or tablet.



## Integrates with EZVIZ alarm system

---

The C6TC can be integrated into the EZVIZ alarm systems. Once an alarm is triggered, the camera will capture a picture and video footage and send them to the device owner.



# Specifications Model CS-CV248-A0-32WFR

## Camera

|              |  |
|--------------|--|
| Image Sensor | 2 megapixel 1/3" Progressive Scan CMOS |
| Shutter      | Self-adaptive shutter                  |
| Lens         | 4mm@ F2.2, Diagonal angle: 95°         |
| PT Angle     | Pan: 340°, Tilt: 90°                   |
| Lens Mount   | M12                                    |
| Day & Night  | IR-cut filter                          |
| DNR          | 3D DNR                                 |
| WDR          | Digital WDR                            |

## Compression

|                   |   |
|-------------------|---|
| Video Compression | H.264                                       |
| H.264 Type        | Main Profile                                |
| Video Bit Rate    | HD, Balanced and Smooth. Adaptive bit rate. |

## Image

|                 |   |
|-----------------|---|
| Max. Resolution | 1920×1080   |
| Image Settings  | Brightness, contrast, saturation, etc.<br>(configurable via EZVIZ Studio) |
| BLC             | Support   |

## Network

|                              |   |
|------------------------------|---|
| Storage                      | Supports MicroSD card (max. 128GB)  |
| Smart Alarm                  | Motion detection  |
| Wi-Fi Pairing Protocol       | SmartConfig (Wi-Fi One-Key Configuration)/AP pairing  |
| Interface Protocol           | EZVIZ Cloud proprietary protocol  |
| General Features             | Anti-Flicker, Dual-Stream, Heartbeat Messages, Mirror Image, Password Protection, Watermark |
| Minimum Network Requirements | 2Mbps   |

## Wireless Specifications (for Wi-Fi-supported devices)

|                   |   |
|-------------------|---|
| Standard          | IEEE802.11b, 802.11g, 802.11n                   |
| Frequency Range   | 2.4 GHz ~ 2.4835 GHz                            |
| Channel Bandwidth | Supports 20MHz                                  |
| Security          | 64/128-bit WEP, WPA/WPA2, WPA-PSK/WPA2-PSK, WPS |
| Transmission Rate | 11b: 11Mbps, 11g: 54Mbps, 11n: 135Mbps          |

## General

|                      |                       |
|----------------------|-----------------------|
| Power Supply         | DC 5V±10%             |
| Power Consumption    | 8W Max                |
| IR Range             | MAX. 10 meters        |
| Product Dimensions   | 100mm x 100mm x 90mm  |
| Packaging Dimensions | 126mm x 126mm x 155mm |
| Weight               | 220g                  |

## Package Contents:

- C6TC X 1
- Base X 1
- 3 Meters Power Cable X 1
- Drill Template X 1
- Screw Kit X 1
- Power Adapter X 1
- Quick Start Guide X 1

## Requirements

- Operating Conditions: -10°C ~ 55°C, Humidity 95% or less (non-condensing)

## Certificates

FCC/UL/IC/NOM/CE/RoHS/WEEE/REACH

Specifications are subject to change without notice. EZVIZ is a registered trademark of Hangzhou EZVIZ Network Co., Ltd.  
Other brands and product names are trademarks or registered trademarks of their respective holders.

<https://www.ezvizlife.com/>

**SICE DISTRIBUTORE UFFICIALE:** [www.sicetelecom.it](http://www.sicetelecom.it)