

quickMOUNT extra

The quickMOUNT extra is an advanced wall mount adapter for large point to point and sector antennas.

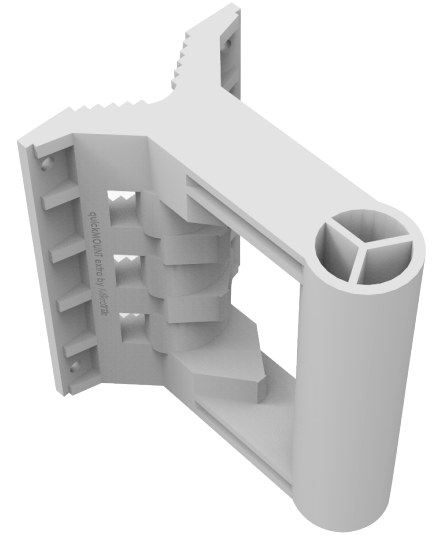
You can mount it on the wall or use it as an adapter from large diameter pole to small size antenna mounting clip ensuring reliable fitment. The quickMOUNT extra gives possibility to turn antenna within 190°.

With the quickMOUNT extra is compatible with our long range heavy antennas like 30dBi parabolic dish mANT 30 or 19dBi sector mANT 19s.

You can use the quickMOUNT extra with any pole mountable device with weight less than 8 Kg

- simple and low cost
- supports mANT, SXT, Omnitik, BaseBox, DynaDish or any other pole mountable device

The adapter is very durable due to it's special material composite - anvilNITE (TM)



Specifications

Product code	QME
Dimensions	102x135x150 mm
Tube diameter	35 mm
Max tube diameter to which mount can be attached	70 mm
Maximum antenna weight	8 kg
Maximum wind load	100 N
Turn angle for MikroTik products	190°
Compatible devices	Any pole mounted antenna with weight under 8kg
Mounting holes	4 (option to add 2 more)
Operational temperature	Range ±40° C
Material	anvilNITE™