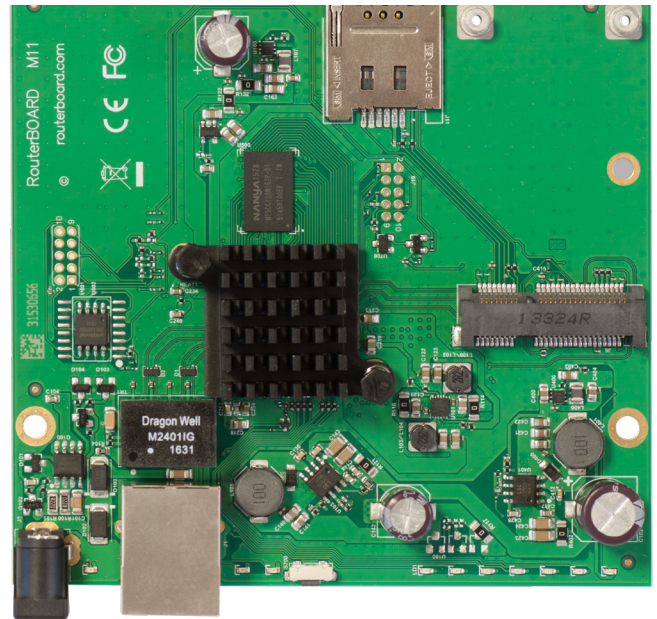


RBM11G

The RBM11G is a fully featured RouterBOARD device perfect for using with your own enclosure or building a custom solution. It uses the same square PCB and mounting holes as its predecessors, you can simply swap out the older models with the brand new RBM11G.

The RBM11G features a new MediaTek dual core CPU running at 880 MHz, a miniPCIe slot for using with a WiFi module of your choice, or with a 3G/LTE modem (SIM slot provided). The device can be powered by PoE through its Gigabit Ethernet connector or through the DC power jack.



Specifications

Product code	RBM11G
CPU	MediaTek MT7621
CPU nominal frequency	880 MHz
CPU core count	2
Size of RAM	256 MB
Storage	Flash, 16 MB
10/100/1000 Ethernet ports	1
MiniPCIe slots	1
SIM card slots	1
PoE in	Yes
Supported input voltage	10 V - 30 V (Passive PoE)
Dimensions	105 x 110 mm
Operating temperature	-40°C .. +70°C tested
License level	4
Operating System	RouterOS
Max Power consumption	11 W