

LHG XL 52 ac

Extremely powerful dual-band backbone / CPE for long-distance connection without downtime

Need a reliable and strong long-distance connection that never goes down? The new **LHG XL 52 ac** will provide just that with its dual-band capability. You can easily setup the 5 GHz channel as the main one with speed up to 600 Mbps and use the 2.4 GHz channel as an automatic backup connection with speed up to 260 Mbps or use both connections at the same time for load balancing.

The powerful 27 dBi 5 GHz / 18 dBi 2.4 GHz antenna will provide connection with link distance up to 40 km+. The grid design ensures protection against wind, it can withstand temperatures from -40 C° to +70 C°. Antenna element is built into the wireless unit – no loss on cables. This device can handle the heaviest loads thanks to the impressive quad-core CPU and 256 MB of RAM. It has a Gigabit Ethernet port, an SFP port, and it is 802.3af/at compliant – you can power it with the smart switches!



Don't let the distance limit your connectivity – choose **LHG XL 52 ac**, a perfect solution for rural areas, farms and huge parks!

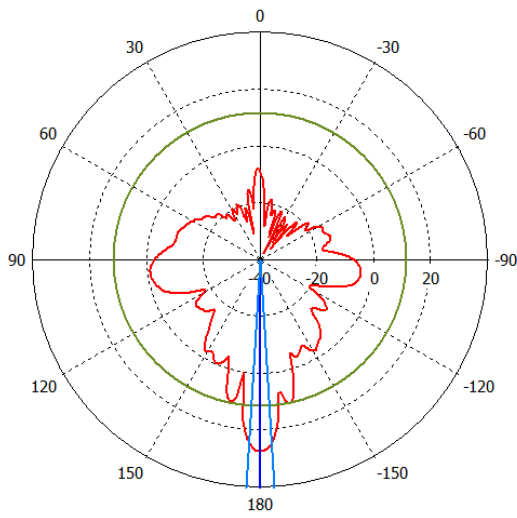
Specifications

| | | |
|----------------------------|--|-----------------|
| Product code | RBLHGG-5HPacD2HPnD-XL | |
| CPU | Quad-core ARM Cortex A7, 716 MHz | |
| Size of RAM | 256 MB | |
| Storage | 16 MB Flash | |
| 10/100/1000 Ethernet ports | 1 | |
| 1G SFP ports | 1 | |
| Wireless | 2.4 GHz | 5 GHz |
| Operating frequency | 2412 - 2484 MHz | 5150 - 5875 MHz |
| Supported protocols | 802.11b/g/n | 802.11a/n/ac |
| Number of chains | 2 | |
| Antenna gain | 18 dBi | 27 dBi |
| Antenna beam width | 15° | 7° |
| Wireless regulation | Specific frequency range can be limited by country regulations | |
| PoE in | 802.3af/at | |
| Supported input voltage | 12 V - 57 V (802.3af/at and passive PoE) | |
| Operating temperature | -40° C .. +70° C | |
| Dimensions | Ø 550 x 291 mm | |
| Max power consumption | 18 W | |
| License level | 3 | |

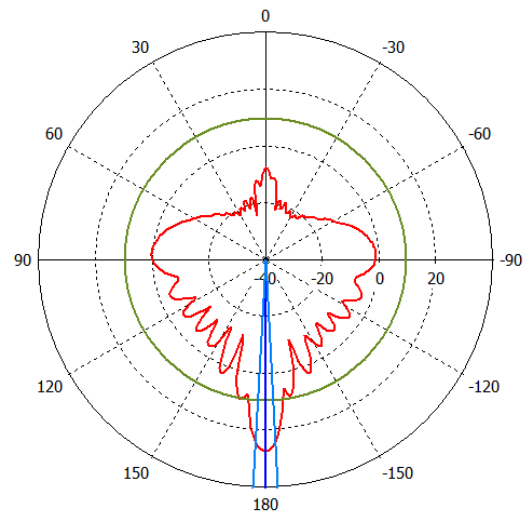
Wireless specifications

| Rate (2.4 GHz) | Tx (dBm) | Rx (dBm) | Rate (5 GHz) | Tx (dBm) | Rx (dBm) |
|----------------|----------|----------|--------------|----------|----------|
| 1MBit/s | 29 | -100 | 6MBit/s | 30 | -96 |
| 11MBit/s | 29 | -93 | 54MBit/s | 26 | -80 |
| 6MBit/s | 31 | -96 | MCS0 | 30 | -96 |
| 54MBit/s | 27 | -80 | MCS7 | 25 | -75 |
| MCS0 | 31 | -96 | MCS9 | 23 | -70 |
| MCS7 | 26 | -75 | | | |

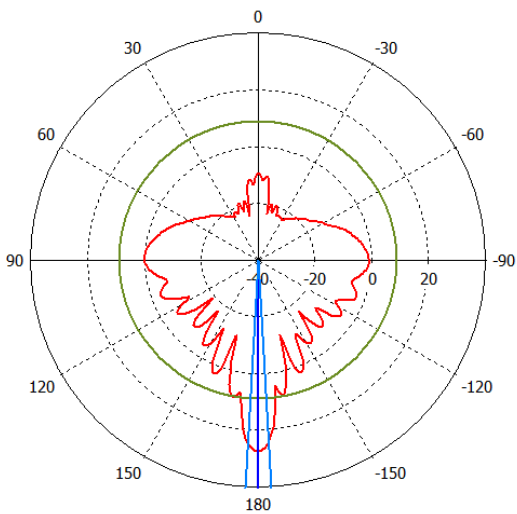
Antenna specifications (5 GHz)



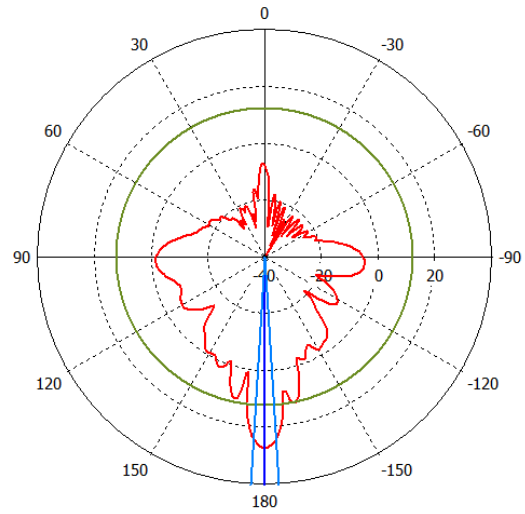
Horizontal 0 deg



Vertical 0 deg

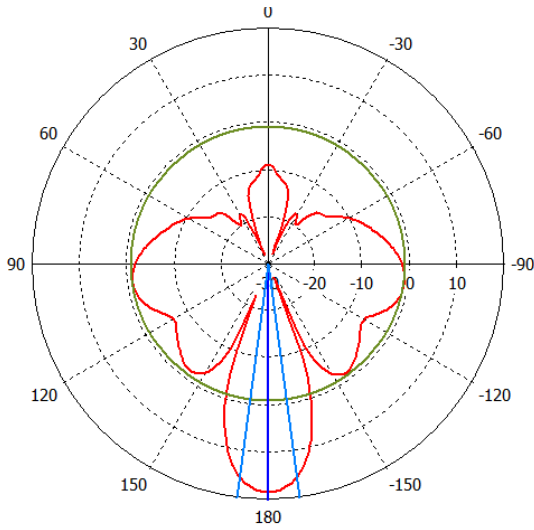


Horizontal 90 deg

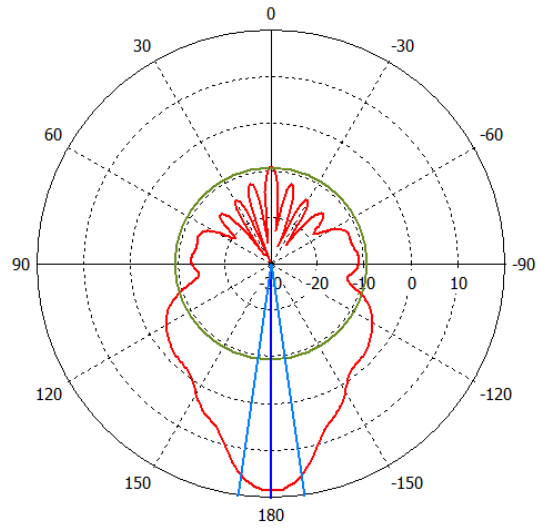


Vertical 90 deg

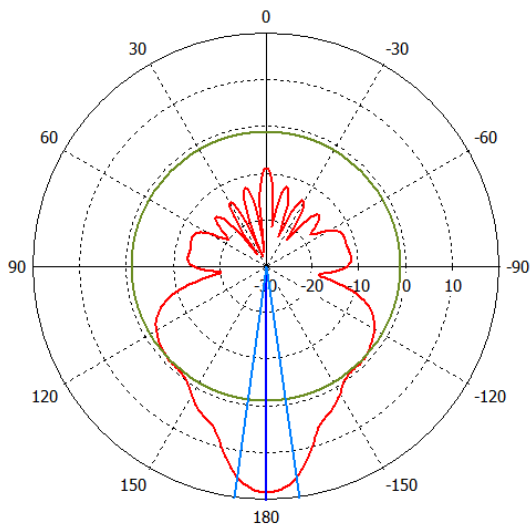
Antenna specifications (2.4 GHz)



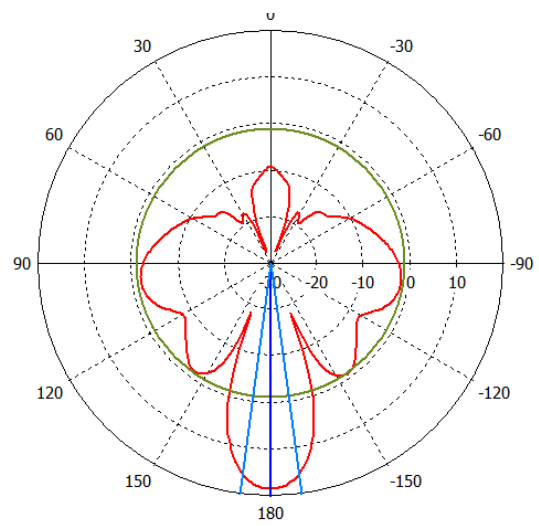
Horizontal 0 deg



Vertical 0 deg



Horizontal 90 deg



Vertical 90 deg

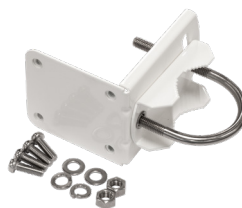
Included parts



24 V 1.2 A
power adapter



Gigabit PoE injector



LHG mount