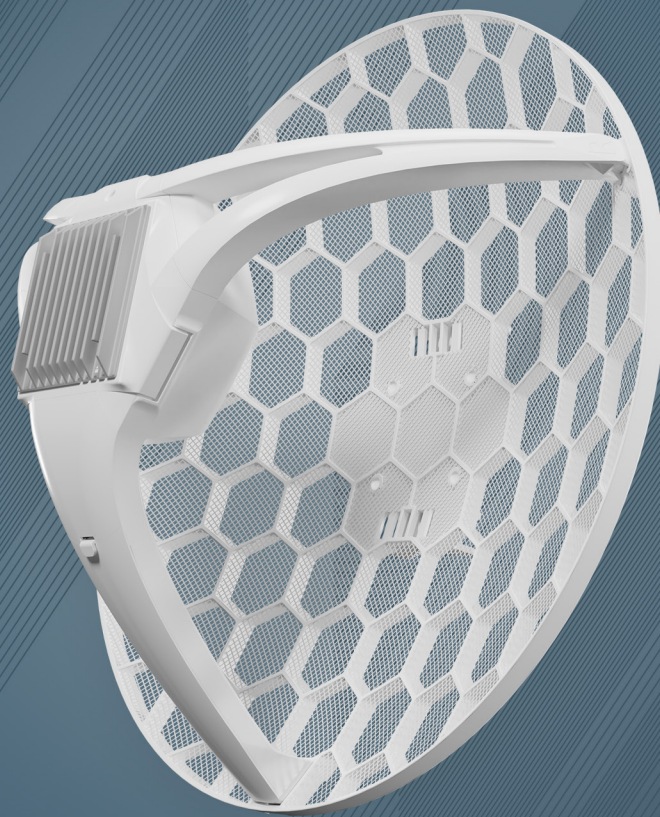


LHGG LTE6 kit

LHGG LTE6 KIT – great solution for great distances.



High-speed Internet even when your phone has no signal!



300 Mbps CAT6 LTE modem



Large high-gain antenna



Gigabit Ethernet with PoE-in



Powerful dual-core CPU and 256MB RAM



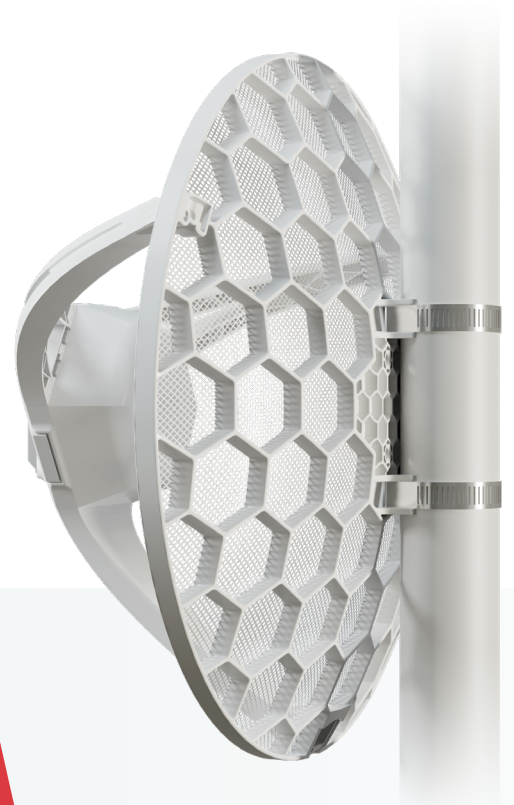
Grid antenna design – perfect for harsh, windy weather



Extreme versatility with the powerful RouterOS

Do you want high-speed Internet in the middle of nowhere? Then you want our newest LHGG LTE6 kit! It is a device for “last mile” Internet access in very remote locations. Mount it outdoors, on a pole, mast or any tall structure, and connect even where cell phones fail. Due to its large high-gain 17 dBi antenna, LHGG LTE6 kit can connect to cell towers in extreme rural locations, giving you the ability to provide last mile internet access where nothing else is available.

With Gigabit Ethernet, an upgraded dual-core CPU, powerful 17 dBi antenna and a massive heat sink, you can trust the LHGG LTE6 kit to handle any challenge!

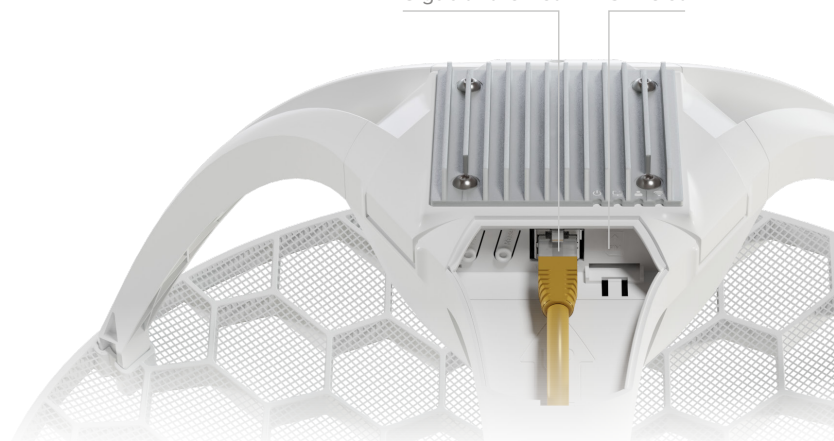


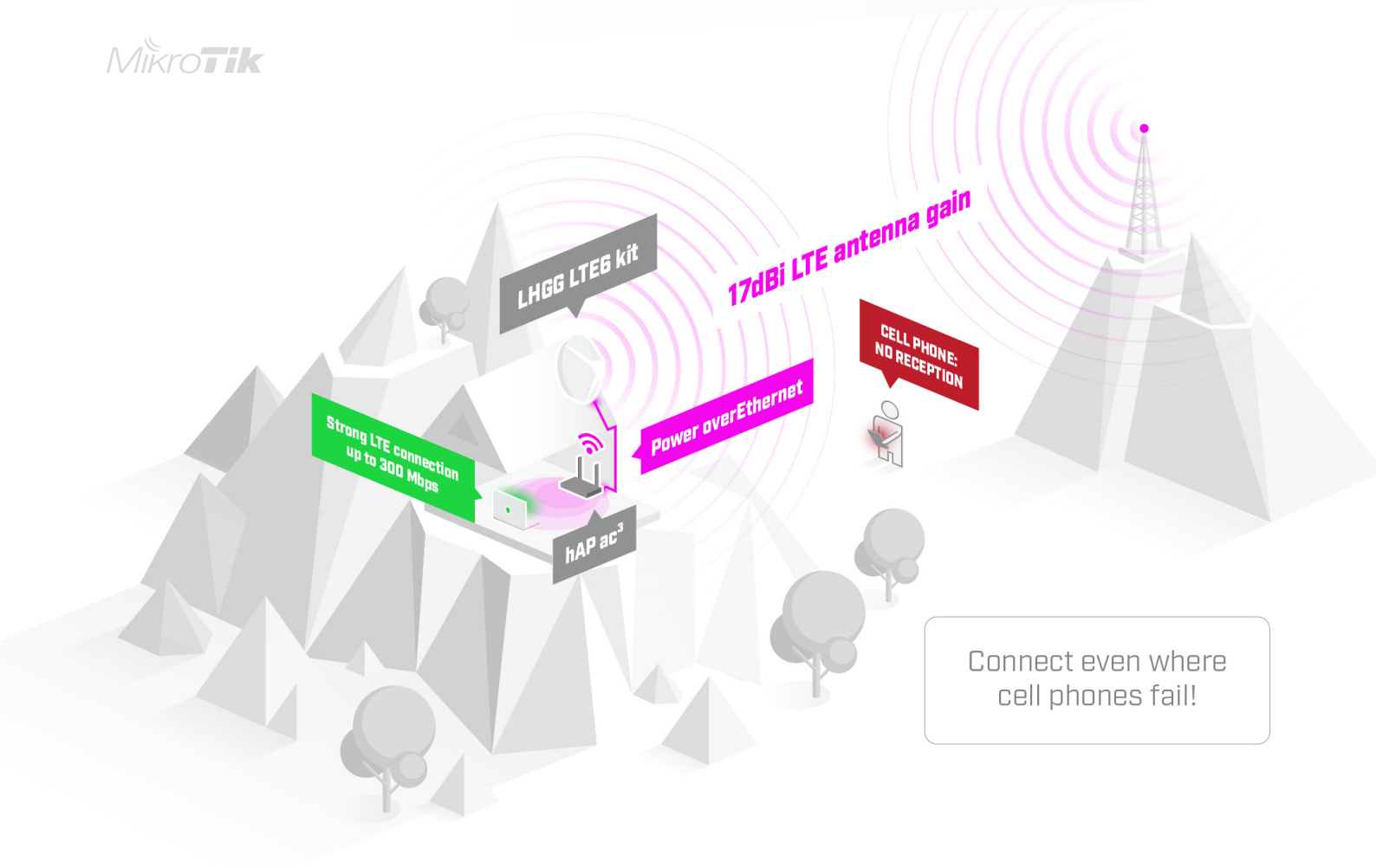
The LHGG LTE6 kit features a 300 Mbps CAT6 LTE modem, which enables carrier aggregation and allows the device to use multiple bands at the same time. That is a huge advantage when there are a lot of LTE users in the area. It provides better responsiveness in a crowded environment and higher efficiency for weaker signal situations in the countryside. We have seen Internet speed doubling in rural areas after switching to CAT6, so there is no need to wait for cable network expansions.

This device features a Gigabit Ethernet port with PoE-in for powering the device from the Ethernet port. The grid antenna design can withstand harsh, windy weather and can be mounted in different ways. There is a massive heat sink, so you don't have to worry about overheating. With this device you can really focus on the important stuff while the tech simply works in the background.

So don't wait for the cable networks to reach you – choose LHGG LTE6 kit and always stay connected!

Gigabit Ethernet SIM slot





Specifications

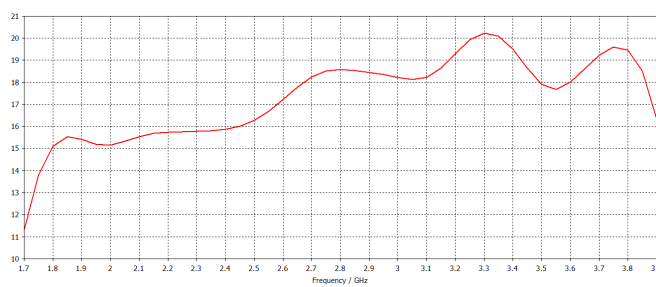
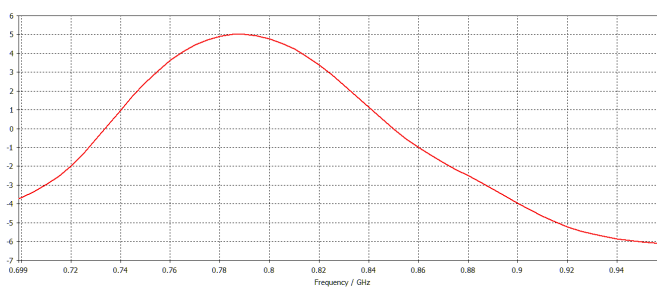
Product code	RBLHGGR&R11e-LTE6
CPU	88F3720
Size of RAM	256 MB
Storage	16 MB flash
Number of 1G Ethernet ports	1
Antenna beam width	25°
Antenna gain	17 dBi
LTE category	6 (300 Mbps downlink, 50 Mbps uplink)
3G category	R7 (21 Mbps downlinks, 5.76 Mbps uplink) R8 (42.2 Mbps downlink, 5.76 Mbps uplink)
2G category	Class12
MiniPCIe slots	1
Micro SIM slot	1
PoE in	802.3af/at
Supported input voltage	12 - 57 V
Dimensions	391 x 391 x 237 mm
Operating temperature	-30°C to +70°C
Operating system	RouterOS, License level 3
Max power consumption	8 W

Supported bands

LHGG LTE6 kit

LTE (FDD) bands	1(2100)/2(1900)/3(1800)/5(850)/7(2600)/8(900)/12(700)/17(700)/20(800)/25(1900)/26(850)
LTE (TDD) bands	38(2600)/39(1900)/40(2300)/41n(2500)
3G bands	1(2100)/2(1900)/5(850)/8(900)
2G bands	2(1900)/3(1800)/5(850)/8(900)

Antenna gain patterns



Certification & Approvals

Certification

CE, FCC, IC

Included parts



24 V 0.8 A
power adapter



K-LHG
fastening set



PoE injector



2x hose clamps