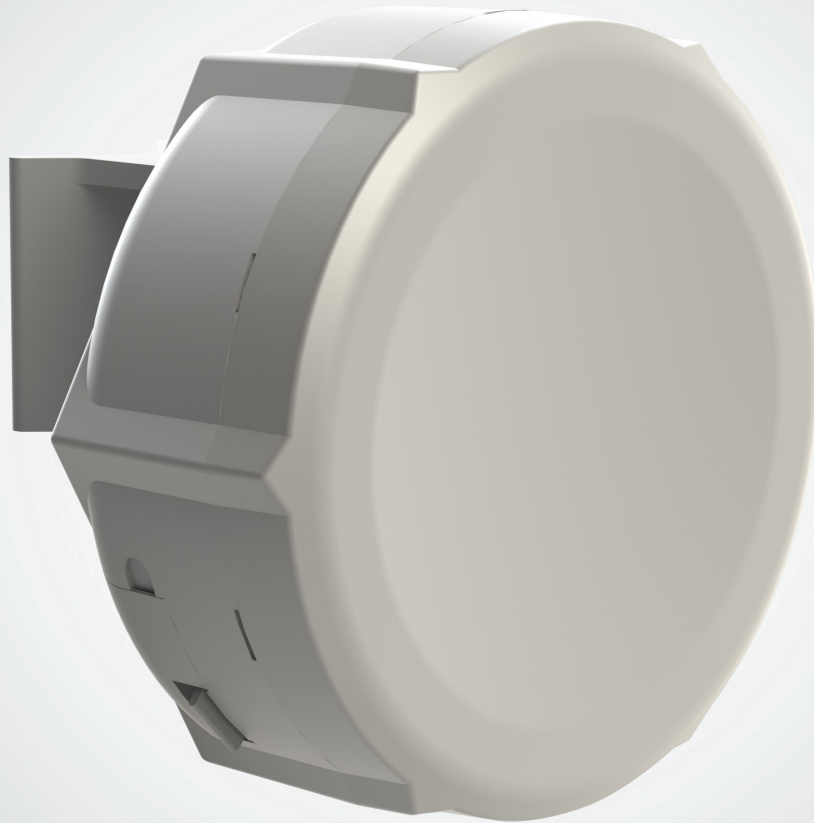


# SXT 5

SXT is a low cost, high speed MIMO 5GHz outdoor wireless device, available as a High Power or Lite version.

SXT Lite5 provides the best price-performance ratio on the Wireless CPE market. Unit is equipped with powerful 600MHz CPU, 64MB RAM, 16dBi dual polarization antenna, poe, power supply and mounting kit. SXT-5HPnDr2 is the high power version (30dBm TX power).

Complete with a ready to mount enclosure and built-in 16dBi antenna, SXT contains everything you need to make a point to point link, or connect to an AP.



24V 0.8A Adapter    24V 0.38A Adapter    Mounting Ring    Pole mounting bracket    PoE injector

Model	SXT 5	SXT Lite5
Product code	RBSXT5HPnDr2	RBSXT5nDr2
CPU	AR9344 600MHz	
Memory	64MB DDR2	
Ethernet	1x 10/100 Ethernet port	
Wireless cards	Onboard dual chain 5GHz 802.11a/n Atheros AR9344 wireless module; 10kV ESD protection on each RF port.	
Frequency range	4920-5920MHz (Limited by country regulatory rules)	
Extras	Reset switch, beeper, USB 2.0 port, voltage and temperature monitors	Reset switch, beeper
LEDs	Power LED, Ethernet LED, 5 wireless signal LED	
Power input	PoE in: 5-30V DC Packaged with 24V DC 0.8A power adapter and passive PoE injector	PoE in: 8-32V DC Packaged with 24V DC 0.38A power adapter and passive PoE injector
Dimensions	140x140x56mm. Weight without packaging, adapters and cables: 265g	
Max consumption	11W at 24V	8W at 24V
Operating Temp	-30C .. +80C	
OS	MikroTik RouterOS, Level3 license	
Package contains	SXT wireless device with integrated antenna, pole mounting bracket, mounting ring, PoE injector, power adapter, quick setup guide	
Certifications	FCC, CE, ROHS	

	5HPnDr2	Lite5
TX/RX at MCS0	30dBm / -93dBm	27dBm / -95dBm
TX/RX at MCS7	26dBm / -71dBm	22dBm / -77dBm
TX/RX at 6Mbit	31dBm / -93dBm	27dBm / -95dBm
TX/RX at 54Mbit	28dBm / -77dBm	23dBm / -80dBm
Antenna	Dual pol. 25deg, 5GHz antenna, 16dBi, -35 dB port to port isolation	