



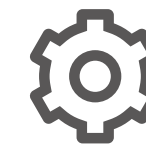
# AC1200 Wireless Dual Band Router

Four Antennas for Faster AC  
Wi-Fi and Greater Coverage

Archer C50



300Mbps + 867Mbps  
Dual Band Wi-Fi



Easy Setup

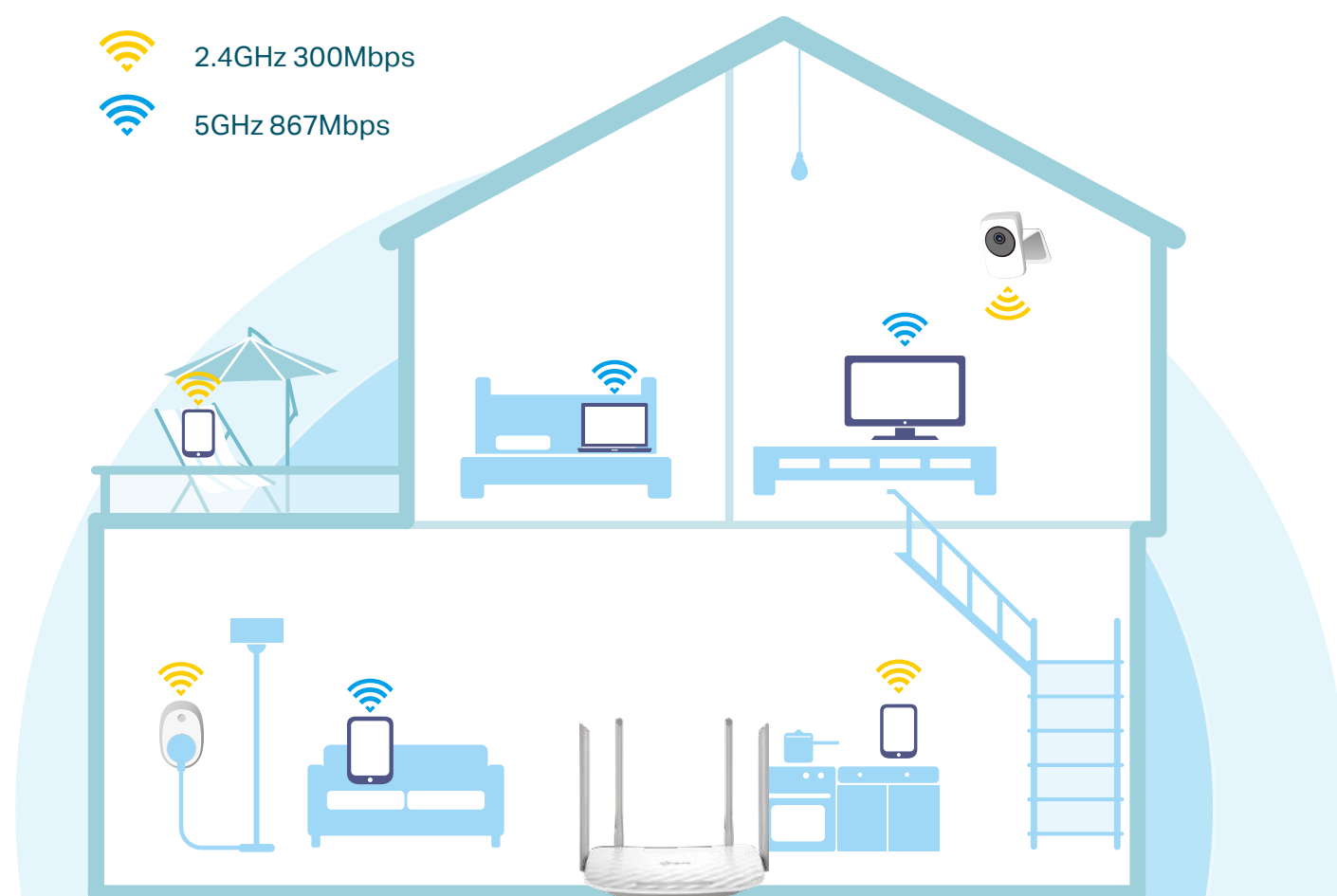


4 × 5dBi  
Antennas

# Highlights

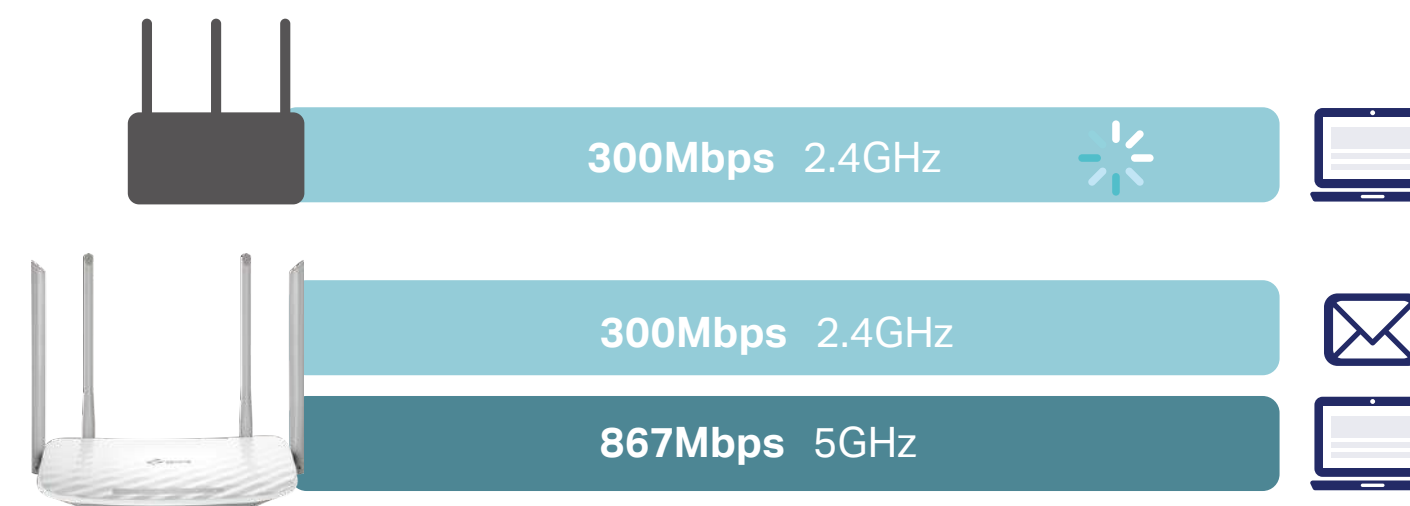
## Household Wi-Fi at Streaming Speeds

Press play and forget about buffering with the Archer C50. The Wireless AC router creates high-speed AC1200 Wi-Fi so you can game online and watch movies in HD at the same time. Thanks to dual Wi-Fi bands, you can run more of your devices at the same time without interruption. The strong 2.4GHz (300Mbps) Wi-Fi band is perfect for sending emails, browsing the web, and listening to music. The crystal 5GHz Wi-Fi band reaches 867Mbps so you can game online and stream in HD simultaneously.



## Strong, Far-Reaching Wi-Fi

AC1200 (300Mbps on 2.4GHz + 867Mbps on 5GHz) Wi-Fi for reliable connections.

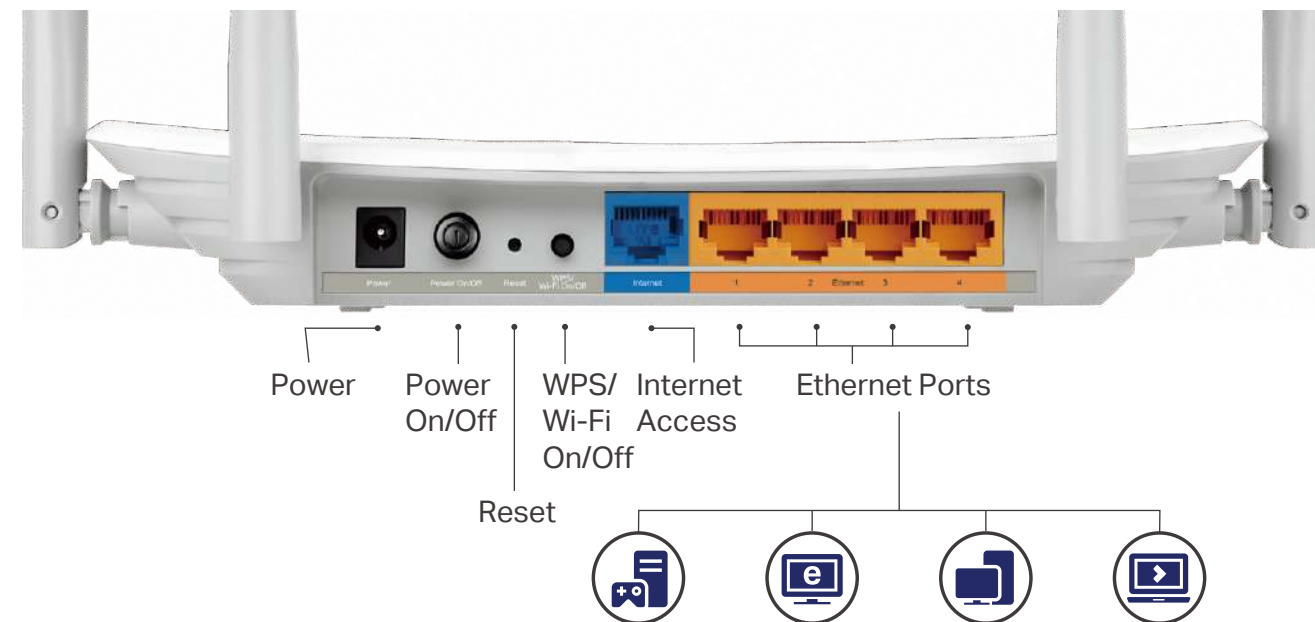


TP-Link AC1200 Wireless Dual Band Router Archer C50

# Highlights

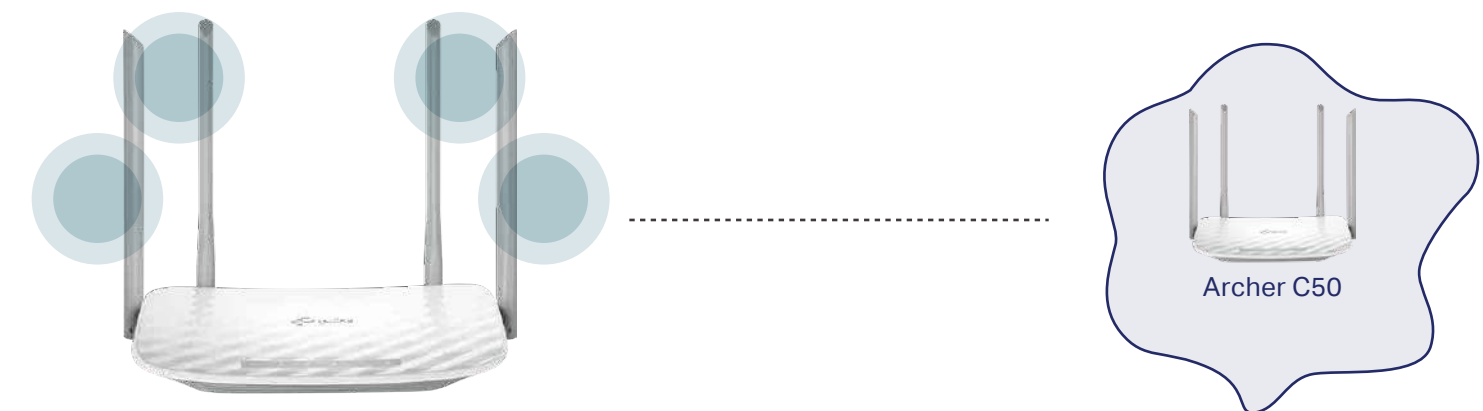
## Fast Ethernet

Enjoy fast, reliable wired connections for gaming and streaming in the best quality.



## Innovative Antenna Design for Maximum Coverage

Four antennas make all of your connections more efficient and stable. Apart from that, LNA (Low Noise Amplifier) of 5GHz wireless band increases the receiving sensitivity to enlarge Wi-Fi coverage for your home.

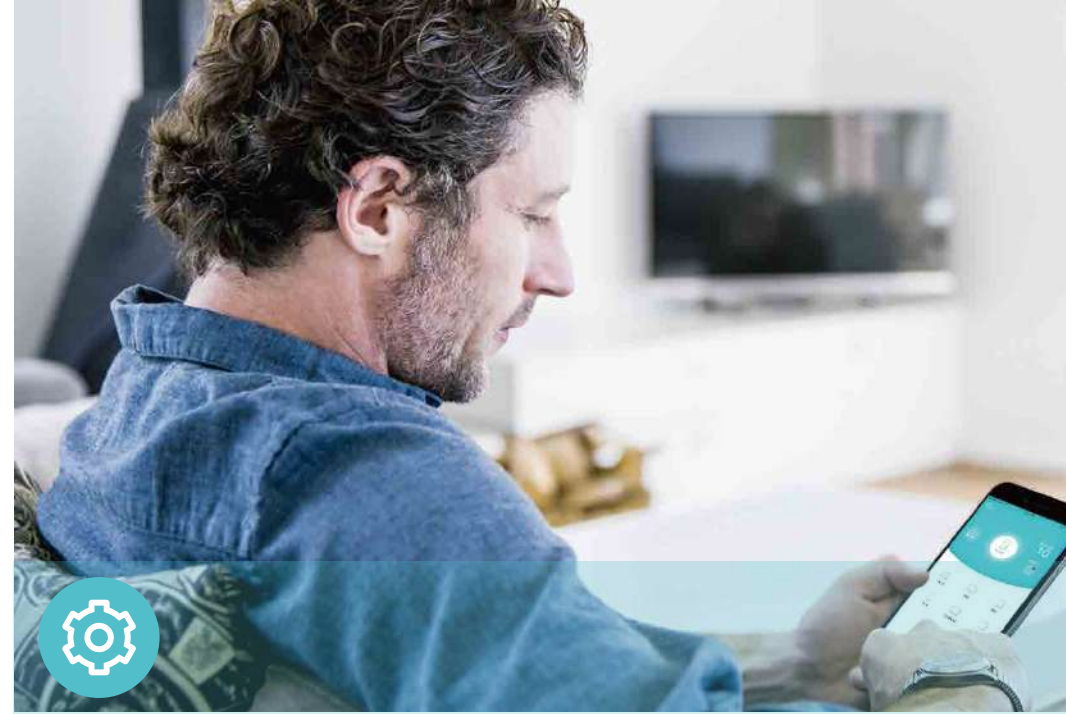


# Features



## Reliability

- **Wireless N Speed** – 300Mbps Wi-Fi speed on 2.4GHz and 867Mbps Wi-Fi speed on 5GHz meet your daily internet needs
- **Easy Bandwidth Management** – Bandwidth Control allocates necessary speed of each connected device to ensure quality of multimedia streaming



## Ease of Use

- **Intuitive Web UI** – Ensure quick and simple installation without hassle
- **Fast Encryption** – One-touch WPA wireless security encryption with the WPS button
- **Easy On/Off** – Turn On/Off wireless radio using the Wi-Fi On/Off button
- **Power On/Off** – Conveniently power on or off your router as required
- **Hassle-free Management with Tether App** – Network management is made easy with the TP-Link Tether App, available on any Android or iOS device



## Security

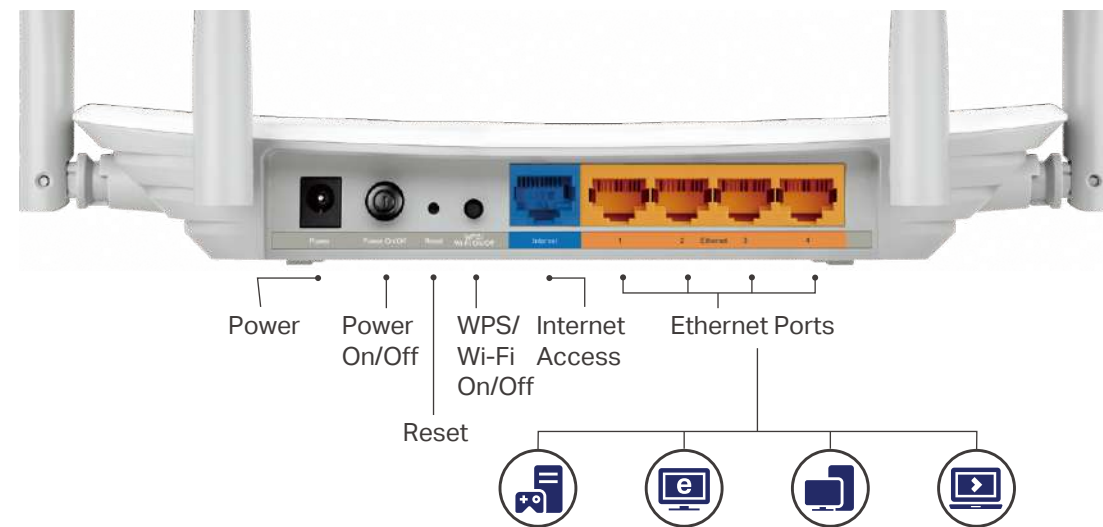
- **Guest Network** – Keep your main network secure by creating a separate network for friends and visitors
- **Access Control** – Establish a whitelist or blacklist to allow or block certain devices from accessing the internet
- **Parental Controls** – Manage when and how connected devices can access the internet
- **Encryptions for Secure Network** – WPA-PSK/WPA2-PSK encryptions provide active protection against security threats



# Specifications

## Hardware

- Ethernet Ports: 4\*10/100Mbps LAN Ports, 1\*10/100Mbps WAN Port
- Buttons: Reset Button, Power On/Off Button, WPS/Wi-Fi On/Off Button
- Antennas: 4 fixed Omni Directional Antennas
- External Power Supply: 9VDC/0.85A
- Dimensions (W x D x H): 9.1 x 5.7 x 1.4 in. (230 x 144 x 35mm)



## Wireless

- Wireless Standards: IEEE 802.11ac/n/a 5GHz, IEEE 802.11b/g/n 2.4GHz
- Frequency: 2.4GHz and 5GHz
- Signal Rate:
  - 5GHz: Up to 867Mbps
  - 2.4GHz: Up to 300Mbps
- Reception Sensitivity:
  - 5G:
    - 11a 54M:-77dBm;
    - 11ac VHT20 MCS8:-72dBm;
    - 11ac VHT40 MCS9:-68 dBm;
    - 11ac VHT80 MCS9:-63 dBm;
  - 2.4G:
    - 11g 54M:-76 dBm;
    - 11n HT20 MCS7:-74 dBm;
    - 11n HT40 MCS7:-71 dBm;
- Wireless Function: Enable/Disable Wireless Radio, WDS Bridge, WMM, Wireless Statistics
- Wireless Security: 64/128-bit WEP,WPA / WPA2,WPA-PSK/ WPA2-PSK encryption

# Specifications

## Software

- WAN Type: Dynamic IP, Static IP, PPPoE, PPTP(Dual Access), L2TP(Dual Access), Bigpond
- DHCP: Server, DHCP Client List, Address Reservation
- Quality of Service: WMM, Bandwidth Control
- Port Forwarding: Virtual Server, Port Triggering, UPnP, DMZ
- Dynamic DNS: DynDns, NO-IP, Comexe
- Access Control: Parental Controls, Local Management Control, Host List, White List, Black List
- Firewall Security: DoS, SPI Firewall, IP Address Filter/MAC Address Filter, IP and MAC Address Binding
- Protocols: IPv4, IPv6
- Management: Access Control, Local Management, Remote Management
- Guest Network: 2.4GHz guest network, 5GHz guest network

## Others

- Certification  
CE, FCC, RoHS, Wi-Fi
- System Requirements  
Microsoft Windows 10/8.1/8/7/Vista/XP/2000/NT/98SE, MAC OS, NetWare, UNIX or Linux  
Internet Explorer 11, Firefox 12.0, Chrome 20.0, Safari 4.0, or other Java-enabled browser  
Cable or DSL Modem  
Subscription with an internet service provider (for internet access)
- Environment  
Operating Temperature: 0°C~40°C (32°F ~104°F)  
Storage Temperature: -40°C~70°C (-40°F ~158°F)  
Operating Humidity: 10%~90% non-condensing  
Storage Humidity: 5%~90% non-condensing
- Package Contents  
Wireless Router Archer C50  
Power Adapter  
RJ45 Ethernet Cable  
Quick Installation Guide



For more information, please visit

<http://www.tp-link.com/en/products/details/Archer-C50.html>

or scan the QR code left

Specifications are subject to change without notice. TP-Link is a registered trademark of TP-Link Technologies Co., Ltd. Other brands and product names are trademarks or registered trademarks of their respective holders. No part of the specifications may be reproduced in any form or by any means or used to make any derivative such as translation, transformation, or adaptation without permission from TP-Link Technologies Co., Ltd.

[www.tp-link.com](http://www.tp-link.com)

TP-Link AC1200 Wireless Dual Band Router Archer C50