




AC1200 Wireless Dual Band 4G LTE Router

Share Your 4G LTE Network



Archer MR400

4G 4G(TDD&FDD)/3G
Compatible

 300 Mbps + 867 Mbps
Dual Band Wi-Fi

 Qualcomm Inside
for Better Reliability

Highlights

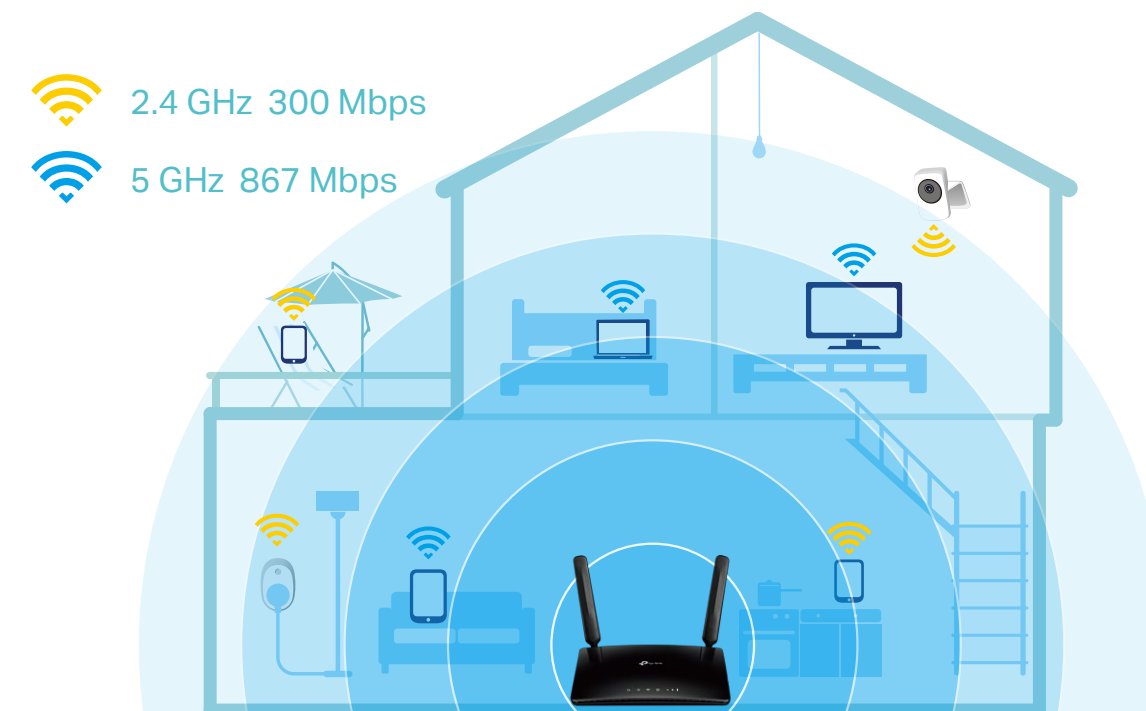
Superfast 4G LTE Speed & Stream-Ready AC Wi-Fi

The Archer MR400 uses 4G LTE technology to achieve speeds of up to 150 Mbps download and 50 Mbps upload. It also shares a simultaneous dual band Wi-Fi network with maximum speeds of 300 Mbps on 2.4 GHz and 867 Mbps on 5 GHz for gaming, streaming, file-sharing and more.



Design for Maximum Network Coverage

Two advanced LTE antennas make efficient and stable connections to every device. Power Amplifier and Low Noise Amplifier boost sending and receiving capabilities, creating a wide-coverage Wi-Fi network for your home.



Highlights

Plug and Play

Simply insert your 3G/4G micro SIM card into the built-in slot, turn on the MR400 and start surfing.



Micro SIM Card

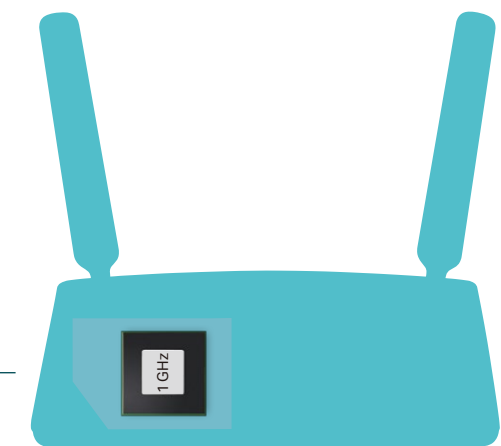


Start Surfing!

More Devices, More Stability

Connect up to 64 wireless devices with ease, thanks to a powerful Qualcomm processor that boosts data transfer speeds while ensuring dependable network stability.

Up to
64
Devices

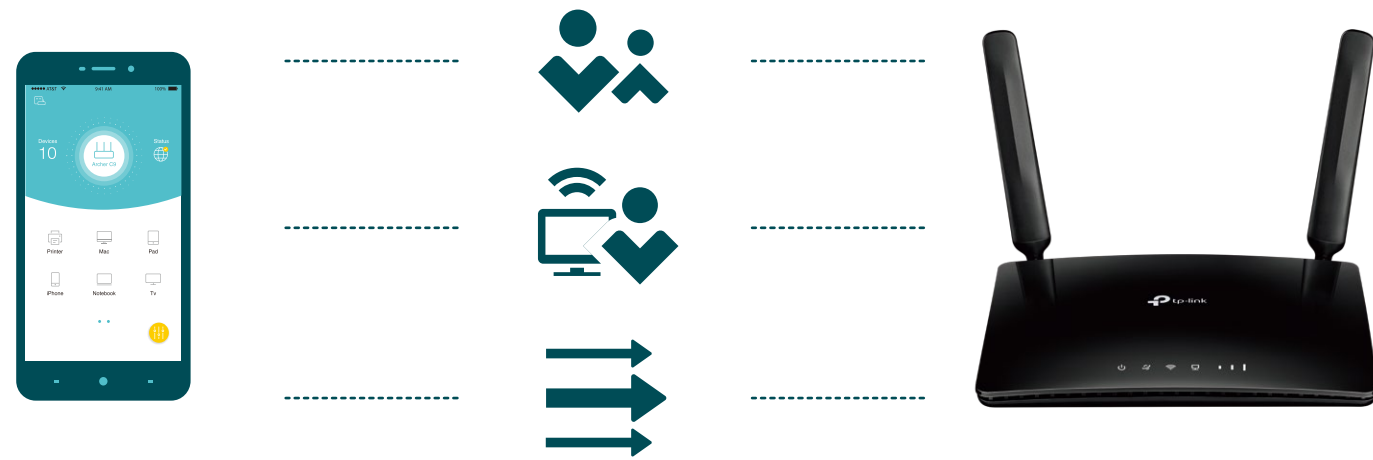


Qualcomm CPU

Highlights

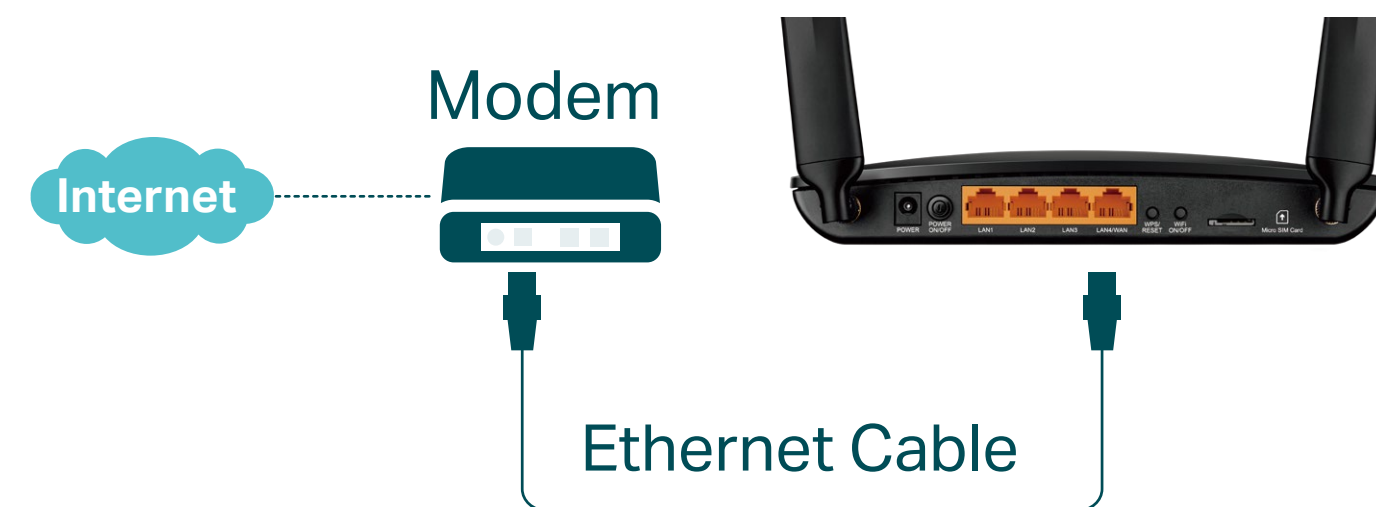
Simple Management

Parental Controls let you easily manage your kids by limiting access to Internet. Guest Network provides separate Wi-Fi access for guests while securing network. QoS assigns more bandwidth to preferred devices to ensure the quality of activities.

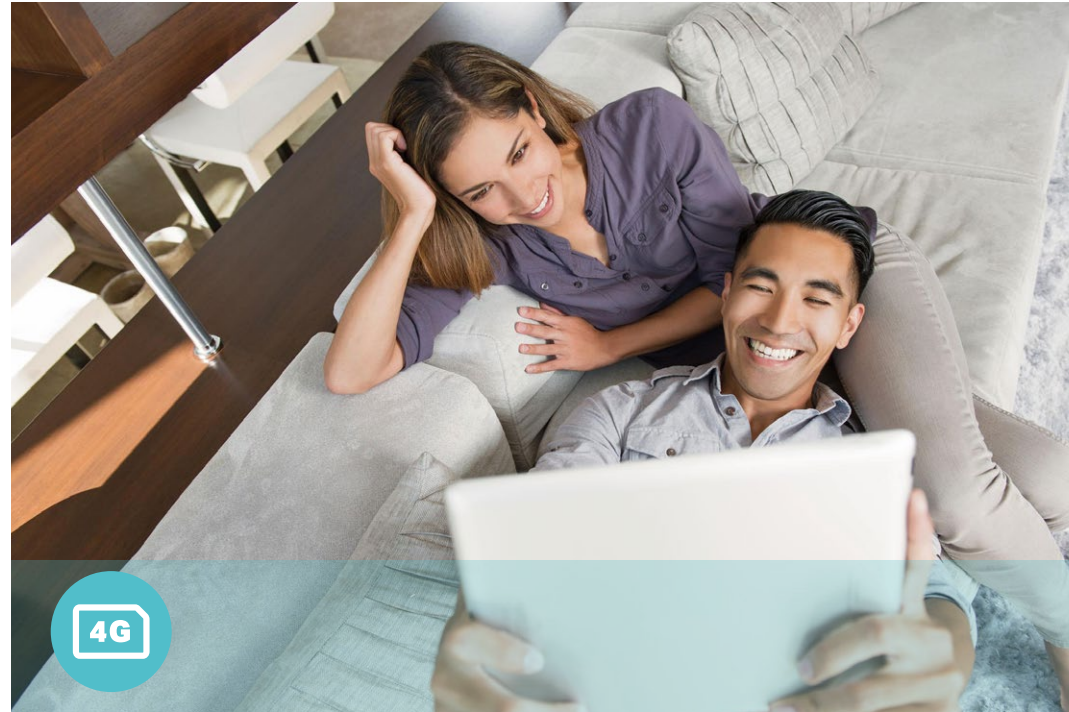


Flexible Connection

With a fully functional WAN/LAN port, MR400 can work as a router which is compatible with cable, fiber, and DSL modems.



Features



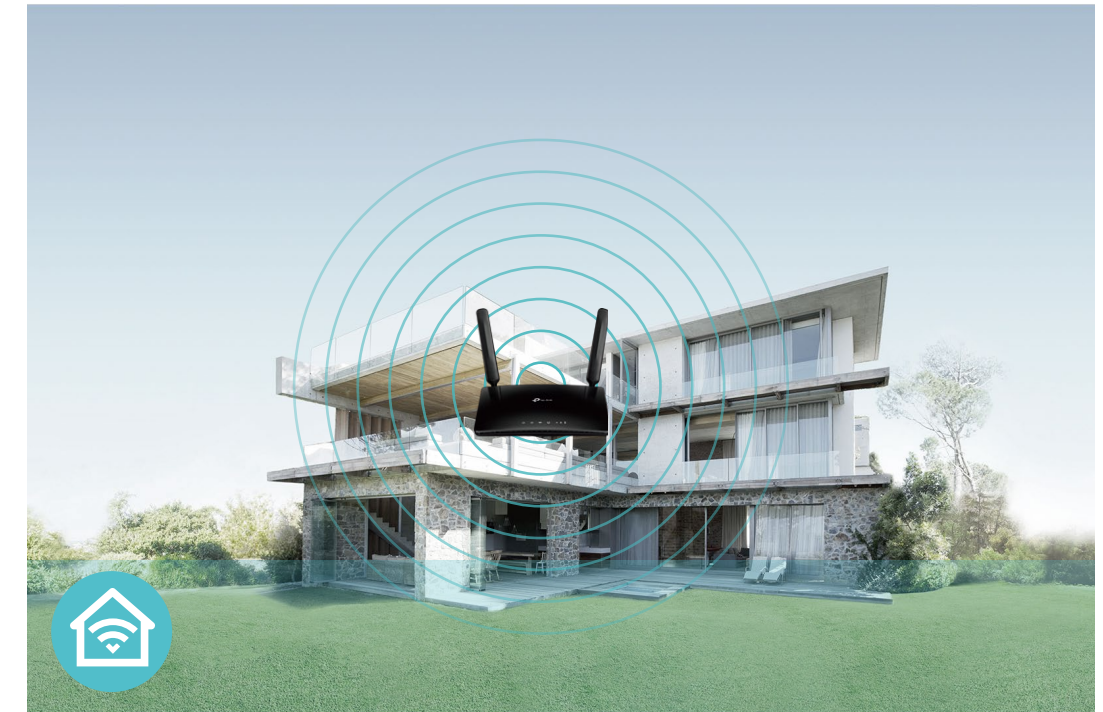
4G LTE

- 4G LTE – Ideal for cutting-edge 4G LTE network
- Backward Compatible – Compatible with 3G network



Wi-Fi Speed

- Superior Wireless Speed – Combined wireless speeds up to 300 Mbps over 2.4 GHz, and 867 Mbps over 5 GHz
- 802.11 ac Standard– Provides a data transfer rate 3 times faster than 802.11n for each stream



Wi-Fi Range

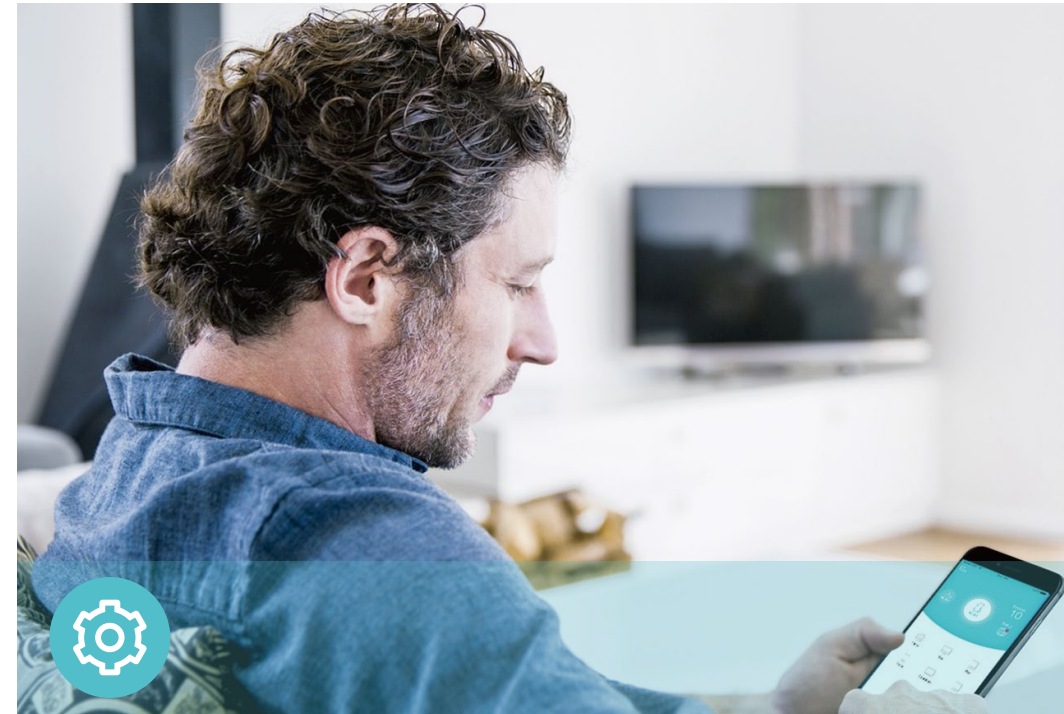
- Great Coverage – Better coverage with integrated Wi-Fi omnidirectional antennas

Features



Reliability

- **Simultaneous Dual Band** – Separate Wi-Fi bands enable more devices to connect to your network without a drop in performance
- **Easy Bandwidth Management** – Advanced QoS makes it easier for you to manage the bandwidth of connected devices
- **Superior Stability** – Powerful processor enables you to connect up to 64 wireless devices with ease



Ease of Use

- **Intuitive Web UI** – Ensures quick and simple installation without hassle
- **Fast Encryption** – One-touch WPA wireless security encryption with the WPS button
- **Wi-Fi On/Off** – Conveniently turn on or off wireless radios as required
- **Hassle-free Management with Tether App** – Network management is made easy with the TP-Link Tether App, available on any Android and iOS device
- **Online Upgrade** – Keeps you informed of the latest firmware and allows online upgrade on the web UI



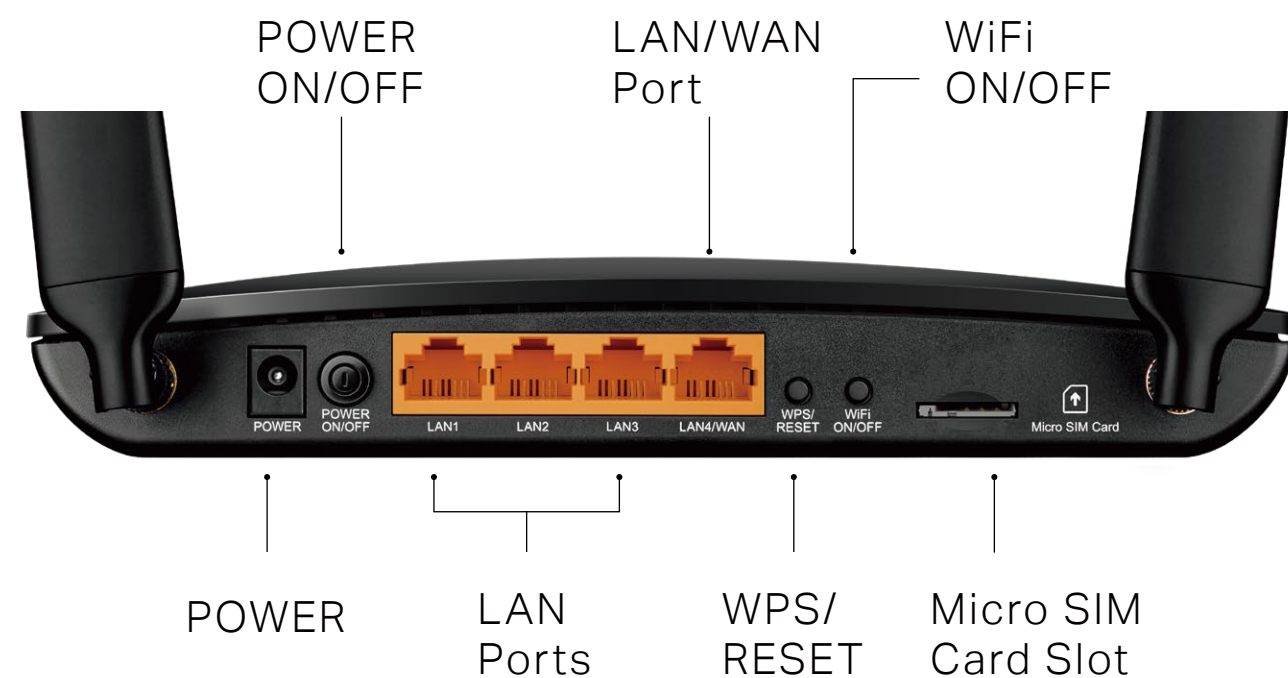
Security

- **Guest Network** – Keeps your main network secure by creating a separate network for friends and visitors
- **Access Control** – Establishes a whitelist or blacklist to allow or restrict certain devices to access the internet
- **Parental Controls** – Restrict internet access time and contents for children devices
- **Encryptions for Secure Network** – WPA-PSK and WPA2-PSK encryptions provide active protection against security threats

Specifications

Hardware

- Interface: 3 10/100Mbps LAN Ports, 1 10/100Mbps LAN/WAN Port, 1 Micro SIM Card Slot
- Buttons: POWER ON/OFF Button, WPS/RESET Button, Wi-Fi ON/OFF Button
- Antennas: 2 Detachable External 4G LTE Antennas
- External Power Supply: 12V/1A
- Dimensions (W x D x H): 7.95 x 5.55 x 1.32 in (202 x 141 x 33.6 mm)



Wireless

- Network Type
 - 4G: FDD-LTE B1/B3/B7/B8/B20 (2100/1800/2600/900/800MHz)
 - TDD-LTE B38/B39/B40/B41 (2600/1900/2300/2500MHz)
 - 3G: DC-HSPA+/HSPA+/HSPA/UMTS B1/B8 (2100/900MHz)
- Wireless Standards: IEEE 802.11a/n/ac 5 GHz, IEEE 802.11b/g/n 2.4 GHz
- Frequency: 2.4 GHz and 5 GHz
- Signal Rate: 300 Mbps at 2.4 GHz, 867 Mbps at 5 GHz
- EIRP (CE): < 20 dBm (2.4 GHz), < 23 dBm (5 GHz)
- Reception Sensitivity:
 - 5 GHz: 11a 54M: -74 dBm
 - 11ac HT20: -66 dBm
 - 11ac HT40: -63 dBm
 - 11ac HT80: -59 dBm
 - 11n HT20: -73 dBm
 - 11n HT40: -70 dBm
 - 2.4 GHz: 11g 54M: -74 dBm
 - 11n HT20: -72 dBm
 - 11n HT40: -69 dBm
- Wireless Function: Enable/Disable Wireless Radio, Wireless Schedule, WMM, Wireless Statistics
- Wireless Security: 64/128-bit WEP, WPA/WPA2, WPA-PSK/WPA2-PSK encryptions

Specifications

Software

- Operating Modes: 3G/4G Router, Wireless Router
- WAN Type: Dynamic IP/Static IP/PPPoE/PPTP(Dual Access)/L2TP(Dual Access)
- DHCP: Server, DHCP Client List, Address Reservation
- Quality of Service: Bandwidth Control
- Port Forwarding: Virtual Server, Port Triggering, UPnP, DMZ
- Dynamic DNS: DynDns, NO-IP
- VPN Server: PPTP VPN, IPsec VPN , OpenVPN
- Firewall Security: DoS, SPI Firewall, IP and MAC Address Binding
- Protocols: IPv4, IPv6
- Management: Access Control, Local Management, Remote Management, reboot schedule
- Guest Network: 2.4 GHz guest network x 1, 5 GHz guest network x 1
- IPsec VPN: Supports up to 10 IPsec VPN tunnels

Others

- Certification:
CE, RoHS
- Requirements:
Microsoft Windows 98SE/NT/2000/XP/Vista™/7/8/8.1/10, MAC OS, NetWare, UNIX or Linux

Internet Explorer 11, Firefox 12.0, Chrome 20.0, Safari 4.0, or other Java-enabled browser

Micro SIM Card
- Environment:
Operating Temperature: 0°C~40°C (32°F ~104°F)
Storage Temperature: -40°C~70°C (-40°F ~158°F)
Operating Humidity: 10%~90% non-condensing
Storage Humidity: 5%~90% non-condensing
- Package Contents
AC1200 Wireless Dual Band 4G LTE Router Archer MR400

RJ45 Ethernet Cable

Power Adapter

Quick Installation Guide



For more information, please visit

http://www.tp-link.com/en/products/details/Archer-MR400_V3.html

or scan the QR code left

Attention: This device may only be used indoors in all EU member states and EFTA countries.

Specifications are subject to change without notice. TP-Link is a registered trademark of TP-Link Technologies Co., Ltd. Other brands and product names are trademarks or registered trademarks of their respective holders. Copyright ©2019 TP-Link Technologies Co., Ltd. All rights reserved.

*Maximum wireless signal rates are the physical rates derived from IEEE Standard 802.11 specifications. Range, coverage, and maximum quantity of connected devices are based on test results under normal usage conditions. Actual wireless data throughput, wireless coverage, and quantity of connected devices are not guaranteed and will vary as a result of 1) environmental factors, including building materials, physical objects, and obstacles, 2) network conditions, including local interference, volume and density of traffic, product location, network complexity, and network overhead, and 3) client limitations, including rated performance, location, connection quality, and client condition.

www.tp-link.com

TP-Link AC1200 Wireless Dual Band 4G LTE Router Archer MR400