

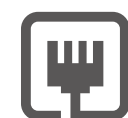


AC1900 Wireless Gigabit VDSL/ADSL Modem Router

1900Mbps Wi-Fi for
Buffer-Breaking
Home Entertainment



Archer VR900



VDSL/ADSL/Fiber/
Cable Compatible



1GHz Dual-
Core CPU



Beamforming

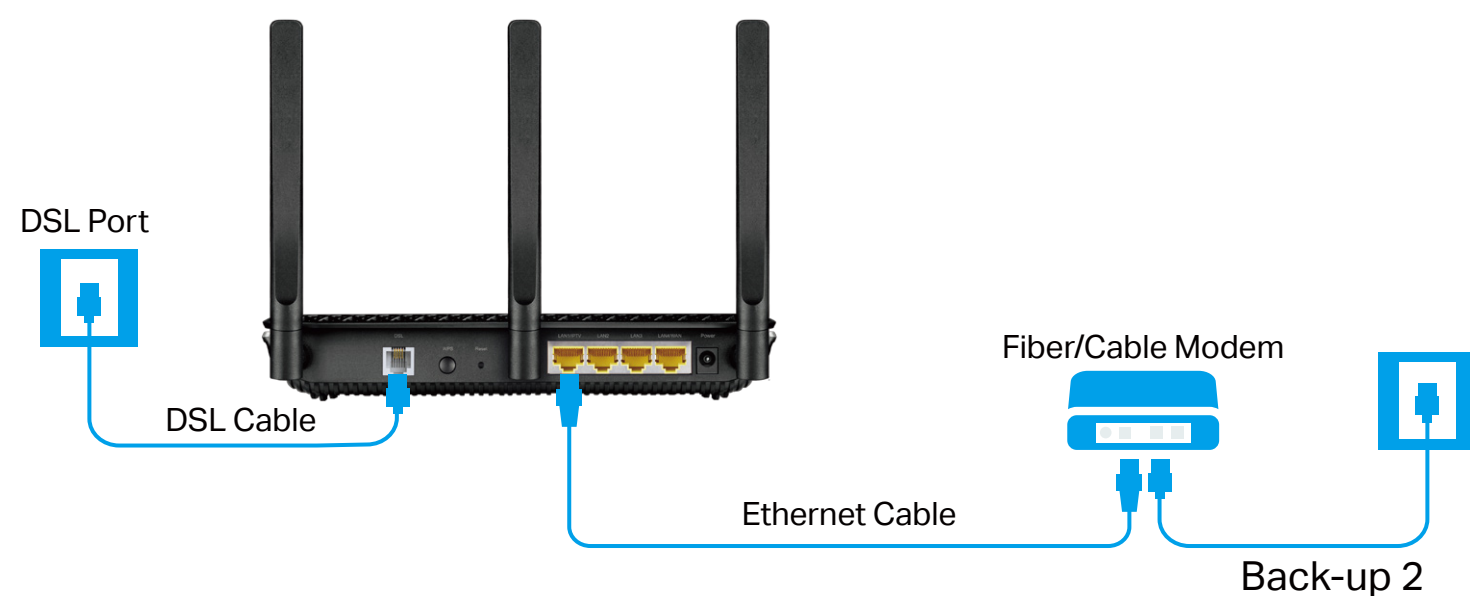


USB 3.0
Ports

Highlights

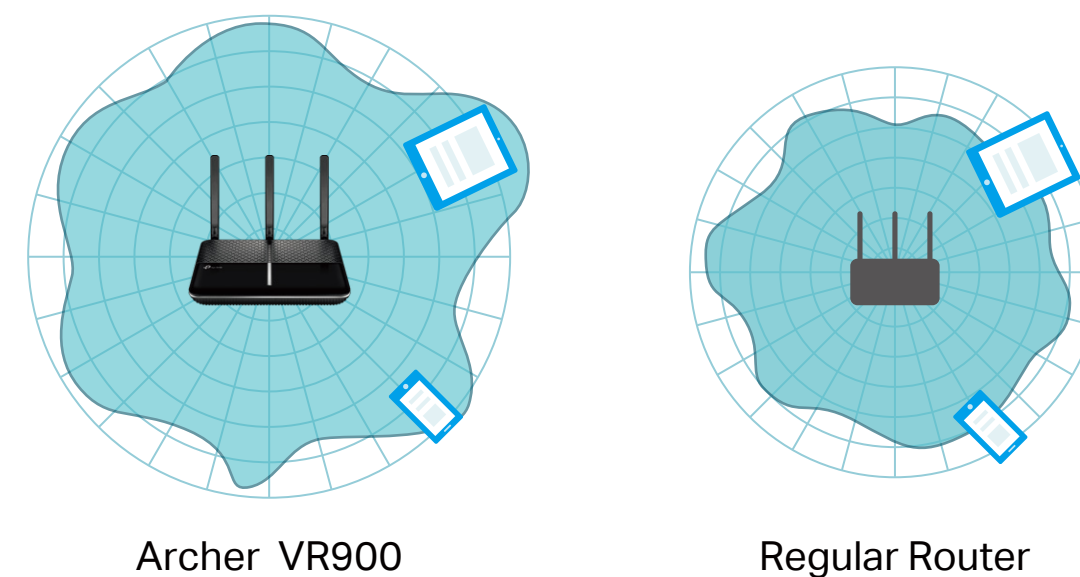
Versatile Connectivity

As a powerful DSL modem router, the Archer VR900 supports super fast VDSL broadband of up to 100Mbps, as well a variety of other connection types. The LAN/WAN port accepts connections from Cable Modem or Fiber Modem.



Beamforming for Better Coverage

Beamforming technology dramatically improves the router's coverage by locating wireless devices to form stronger, more reliable connections, even as mobile devices move from room to room.



Highlights

TurboQAM™ (256QAM) & Full Gigabit Ports

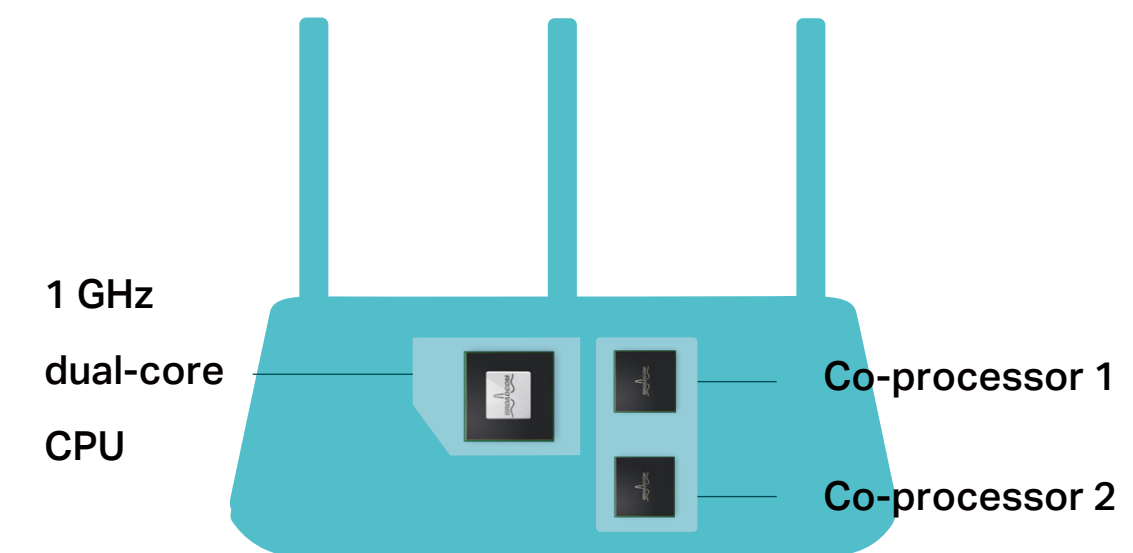
TurboQAM™ (256QAM) Technology boosts your wireless network speed by up to 33% when compared to standard single-stream routers for excellent performance over 2.4GHz.

4 Gigabit LAN ports help wired devices achieve peak performance for HD streaming and gaming.



1 GHz Dual-Core CPU + 2 Co-Processors

The Archer VR900 adds a dedicated processor for each band to manage Wi-Fi traffic, freeing up the router's 1GHz dual-core CPU to tackle more consuming tasks.

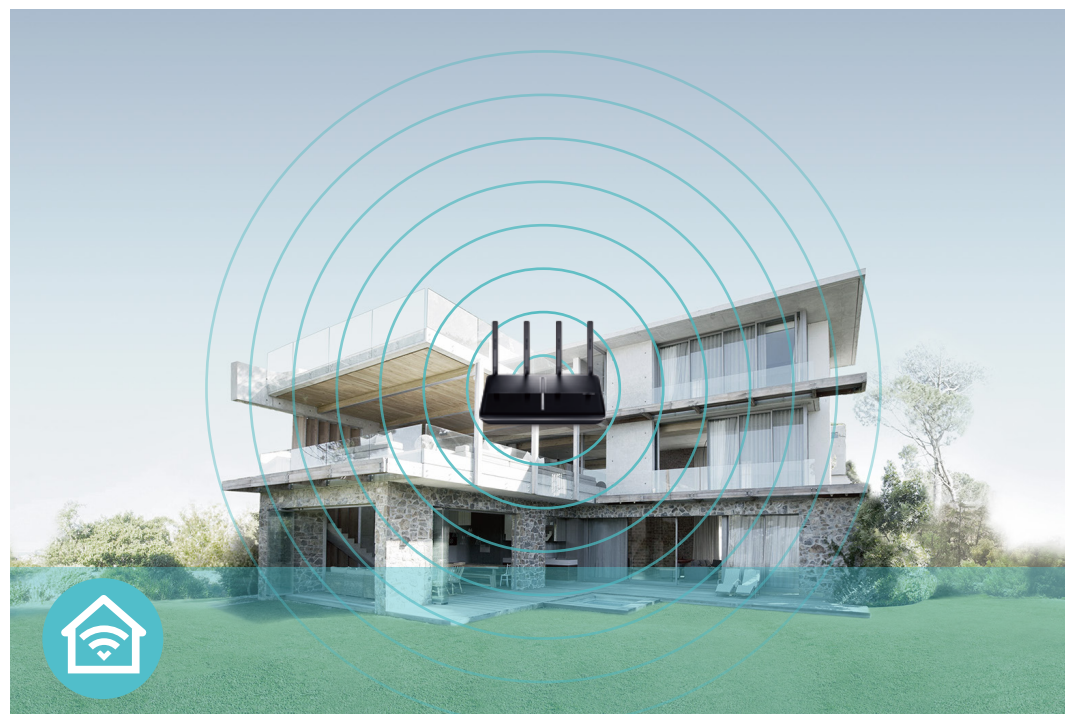


Features



Speed

- **Ultimate Wireless Speed** – Combined wireless speeds of up to 600 Mbps (over 2.4GHz) and 1300 Mbps (over 5GHz)
- **TurboQAM™ (256QAM) Technology** – Uses TurboQAM™ (256QAM) modulation scheme for higher data throughput, boosting wireless speeds by up to 33%
- **802.11 ac** – Provides a data transfer rate 3 times faster than 802.11n for each stream
- **Dual-core CPU** – 1GHz dual-core CPU and 2 co-processors make multi-tasking easy and boost data transfer rate



Wi-Fi Range

- **Ultimate Range Wi-Fi** – 3 dual band detachable antennas ensure widespread Wi-Fi coverage and a stable connection
- **Wi-Fi with Beamforming** – Beamforming technology locates the connected devices and further improves the Archer VR900's range and the signal strength to each mobile device, delivering a more reliable and efficient wireless connection



Reliability

- **Simultaneous Dual Band** – Separate Wi-Fi bands enable more devices to connect to your network without a drop in performance
- **QoS** – Device/Application-based QoS makes it easier for you to prioritize the internet traffic

Features



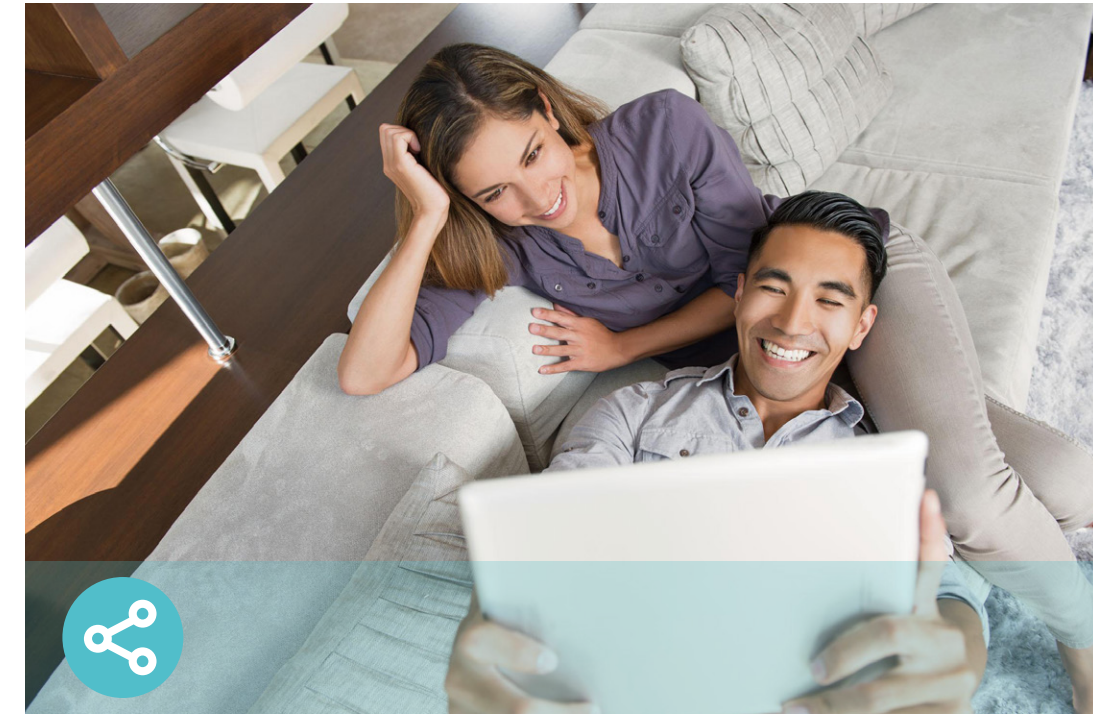
Ease of Use

- Intuitive Web UI – Ensures quick and simple installation without hassle
- Fast Connection – Connect wireless devices securely with the press of WPS button
- Easy On/Off – Turn On/Off power, wireless radio and LEDs separately using the Power On/Off, Wi-Fi On/Off and LED On/Off buttons
- Remote Management with TP-Link ID – Manage your home network from your smartphone or tablet via a single TP-Link ID, no matter where you find yourself
- Hassle-free Management with Tether App – Network management is made easy with the TP-Link Tether App, available on any Android or iOS device
- Online Upgrade – Keeps you informed of the latest firmware and allows online updating



Security

- Guest Network – Keep your main network secure by creating a separate network for friends and visitors
- Access Control – Establish a whitelist or blacklist to allow or block certain devices from accessing the internet
- Parental Controls – Manage when and how connected devices can access the internet
- VPN Server – OpenVPN, PPTP VPN and IPSec VPN are supported, making it easy to set up a secure connection between your private network and the internet
- Encryptions for Secure Network – WPA-PSK/WPA2- PSK encryptions provide active protection against security threats



Easy Sharing

- Dual USB Ports for Fast Sharing – With two ultra-fast USB 3.0 ports, you can access and share a printer as well as your files and media locally. Through the modem router's FTP server, you can also access your files and media from network devices remotely
- 10x Faster Transfer Speed – The USB 3.0 port provides up to 10x faster USB hard drive access than previous generation USB 2.0 connections
- Built-in Print Server – Allows wireless printing from multiple computers (works in conjunction with a USB printer)
- Built-in Media Server – Allows you to play music, watch videos and view photos from any device on your network

TP-Link AC1900 Wireless Gigabit VDSL/ADSL Modem Router **Archer VR900**

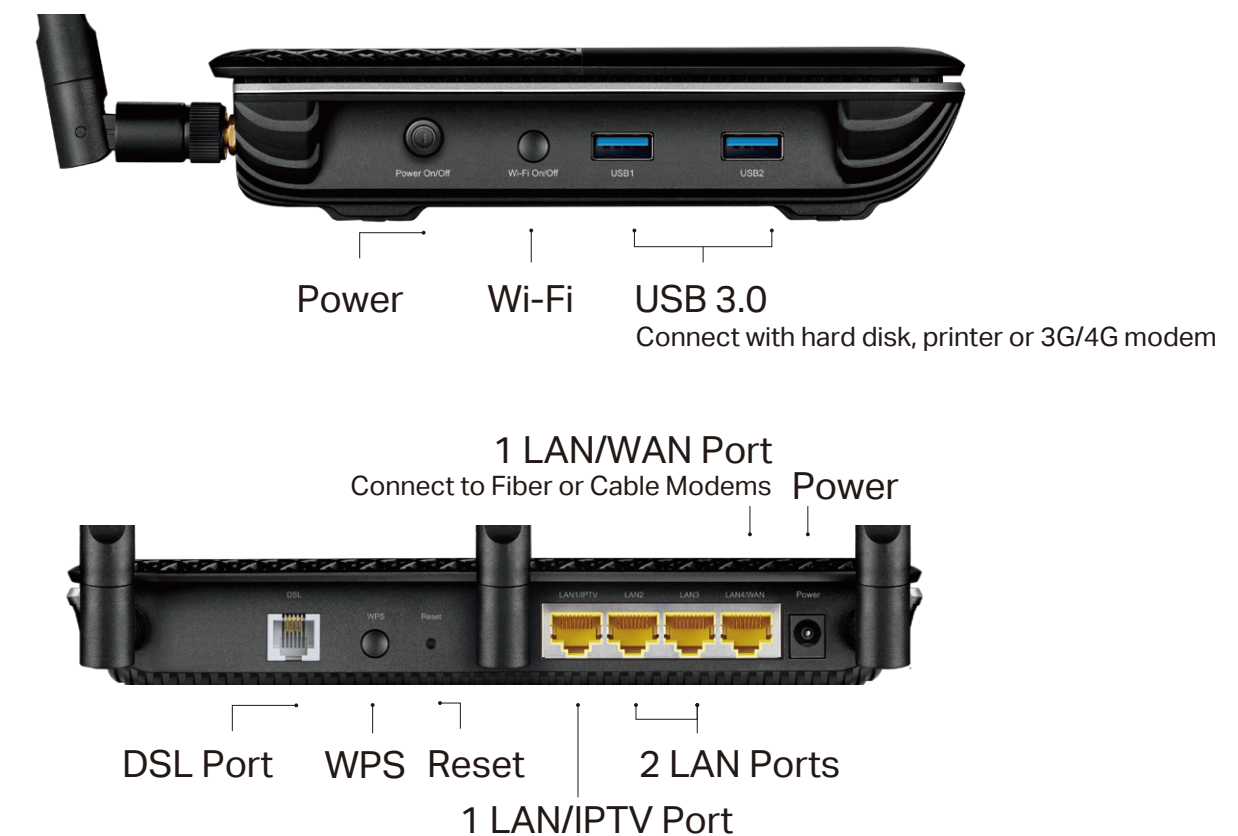
Specifications

Hardware

- Ethernet Ports: 3 10/100/1000Mbps RJ45 LAN Ports, 1 10/100/1000Mbps RJ45 WAN/LAN Port, 1 RJ11 Port
- USB Port: 2 USB 3.0
- Button: WPS Button, Wi-Fi Button, Reset Button, LED On/Off Button, Power On/Off Button
- External Power Supply: 12V/2.5A
- Dimensions (W x D x H): 8.5 × 6.4 × 1.5 in (215.8 x 163.8 x 37.8mm)
- IEEE Standards: IEEE 802.3, IEEE 802.3u, 802.3ab
- VDSL2 Standards: ITU G.993.2, Up to 17a profile (POTS)
 - ITU-T G.993.5 (G.vector)
 - ITU-T G.998.4 (G.INP)
- ADSL Standards: Full-rate ANSI T1.413 Issue 2,
 - ITU-T G.992.1(G.DMT),
 - ITU-T G.992.2(G.Lite),
 - ITU-T G.994.1 (G.hs),
- ADSL2 Standards: ITU-T G.992.3 (G.DMT.bis),
- ADSL2+ Standards: ITU-T G.992.5
- Antenna Type: 3 external detachable dual band antennas (RP-SMA)
- Antenna Gain: 2dBi for 2.4GHz and 3dBi for 5GHz

Wireless

- Wireless Standards: IEEE 802.11ac/n/a 5GHz, IEEE 802.11b/g/n 2.4GHz
- Frequency: 2.4GHz and 5GHz
- Signal Rate: 1300Mbps at 5GHz, 600Mbps at 2.4GHz
- Transmit Power: <20dBm (2.4GHz), <23dBm (5GHz)
- Wireless Function: Enable/Disable Wireless Radio, WMM, Wireless Statistics
- Wireless Security: 64/128-bit WEP, WPA/WPA2, WPA-PSK/WPA-PSK2 encryptions
- Wireless Schedule: Support 2.4GHz and 5GHz Wireless Schedule



TP-Link AC1900 Wireless Gigabit VDSL/ADSL Modem Router **Archer VR900**

Specifications

Software

- Operation Modes: VDSL/ADSL Modem Router, Wireless Router, 3G/4G Router
- DHCP: Server, Client, DHCP Client List, Address Reservation, DHCP Relay
- Quality of Service: ATM QoS, Traffic Control (IP QoS)
- Port Forwarding: Virtual Server, Port Triggering, DMZ, ALG, UPnP
- Dynamic DNS: DynDns, NO-IP, TP-Link
- VPN: OpenVPN, PPTP VPN, IPsec VPN
- ATM/PPP Protocols: ATM Forum UNI3.1/4.0, PPP over ATM (RFC 2364), PPP over Ethernet (RFC2516), IPoA (RFC1577/2225), MERIPoE (RFC 1483 Routed), Bridge (RFC1483 Bridge), PVC – Up to 8 PVCs
- Security: NAT Firewall, SPI Firewall, Access Control, Service Filtering, Denial of Service (DoS), SYN Flooding, Ping of Death, IP and MAC Address Binding
- Advanced Functions: Parental Controls, Network Address Translation(NAT), Port Mapping (Grouping), Static Routing, RIP v1/v2 (optional), DNS Proxy, DDNS, IGMP V1/V2/V3
- USB Sharing: Support Samba (Storage) / FTP Server / Media Server / Printer Server, 3G/4G Modem / SFTP Server / Web Storage
- Management: Web Based Configuration (HTTP / HTTPS), Remote management, Command Line Interface, SSL for TR-069, SNMP v1/2c, Firmware Upgrade, Diagnostic Tools, Free Online Firmware Update
- Guest Network: 2.4GHz guest network, 5GHz guest network
- IPsec VPN: Support up to 10 IPsec VPN tunnels
- Protocols: Support IPv4 and IPv6



For more information, please visit

<http://www.tp-link.com/en/products/details/Archer-VR900.html>

or scan the QR code left

Attention: This device may only be used indoors in all EU member states and EFTA countries. Specifications are subject to change without notice. TP-Link is a registered trademark of TP-Link Technologies Co., Ltd. Other brands and product names are trademarks or registered trademarks of their respective holders. Copyright ©2017 TP-Link Technologies Co., Ltd. All rights reserved.

Others

- Certification: CE, RCM, RoHS
- System Requirements:
 - Microsoft Windows 98SE, NT, 2000, XP, Vista™ or Windows 7, 8, 8.1, 10, Mac OS, NetWare, UNIX or Linux
 - Internet Explorer 11, Firefox 12.0, Chrome 20.0, Safari 4.0, or other Java-enabled browser
 - Subscription with an internet service provider (for internet access)
- Environment
 - Operating Temperature: 0°C~40°C (32°F ~104°F)
 - Storage Temperature: -40°C~70°C (-40°F ~158°F)
 - Operating Humidity: 10%~90% non-condensing
 - Storage Humidity: 5%~90% non-condensing
- Package Contents
 - AC1900 Wireless Gigabit VDSL/ADSL Modem Router Archer VR900
 - External Splitter
 - RJ11 DSL Cable
 - RJ45 Ethernet Cable
 - Power Adapter
 - Quick Installation Guide

www.tp-link.com

TP-Link AC1900 Wireless Gigabit VDSL/ADSL Modem Router **Archer VR900**