



# AC750 Wi-Fi Travel Router

Fast Wi-Fi Travels  
with You

TL-WR902AC



300Mbps+433Mbps  
Dual Band Wi-Fi



Multi-Mode

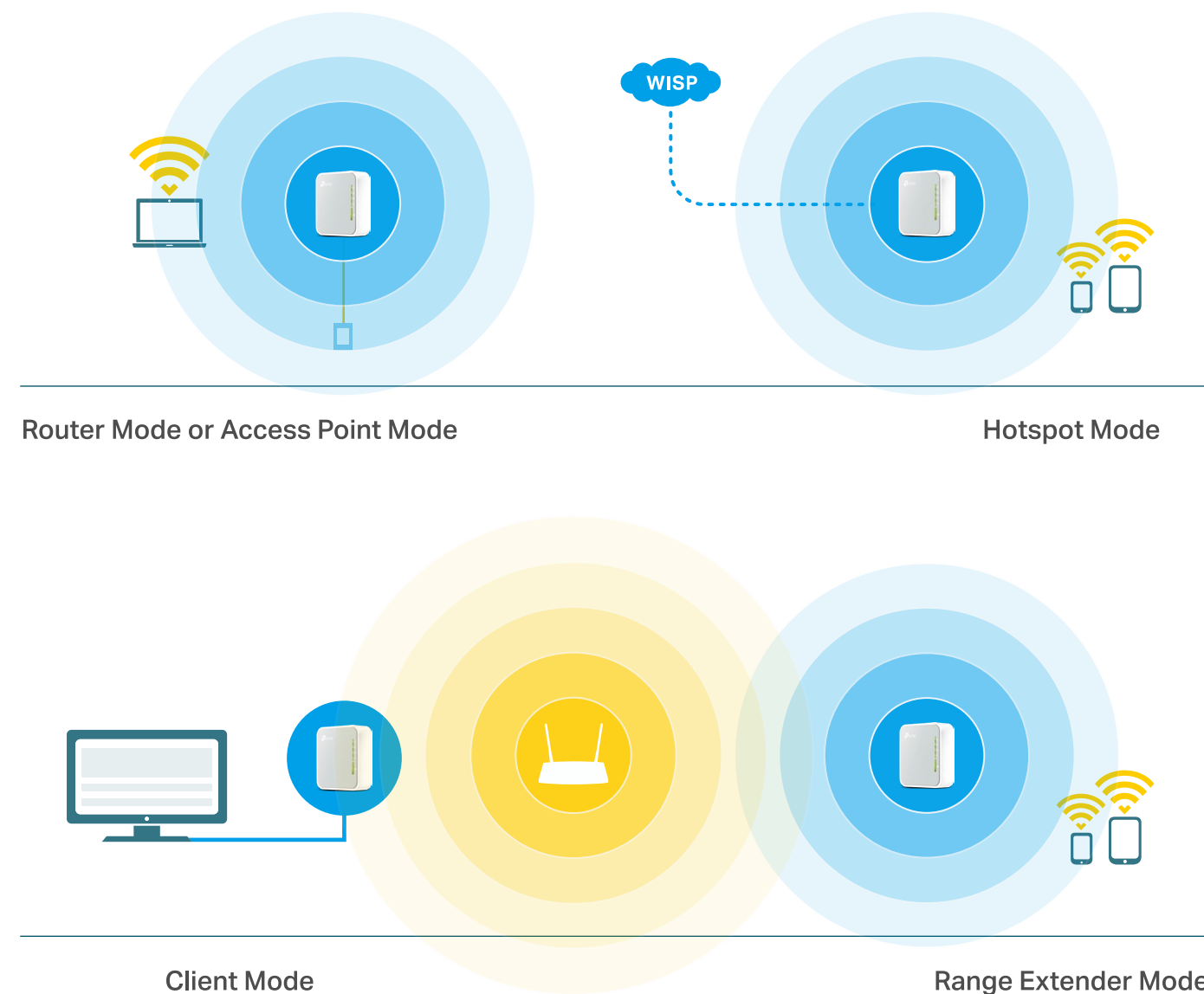


Compact  
Design

# Highlights

## Quick Mode Selection

To meet the wireless needs of almost any situation you might encounter, the TL-WR902AC features Router, Hotspot, Range Extender, Client and Access Point Modes.



## During Travel

- Router Mode: create your own private Wi-Fi network via Ethernet or 3G/4G modem\*

\* 3G/4G modem is only supported in some regions.

- Hotspot Mode: turn existing Wi-Fi into a private wireless network

## At Home

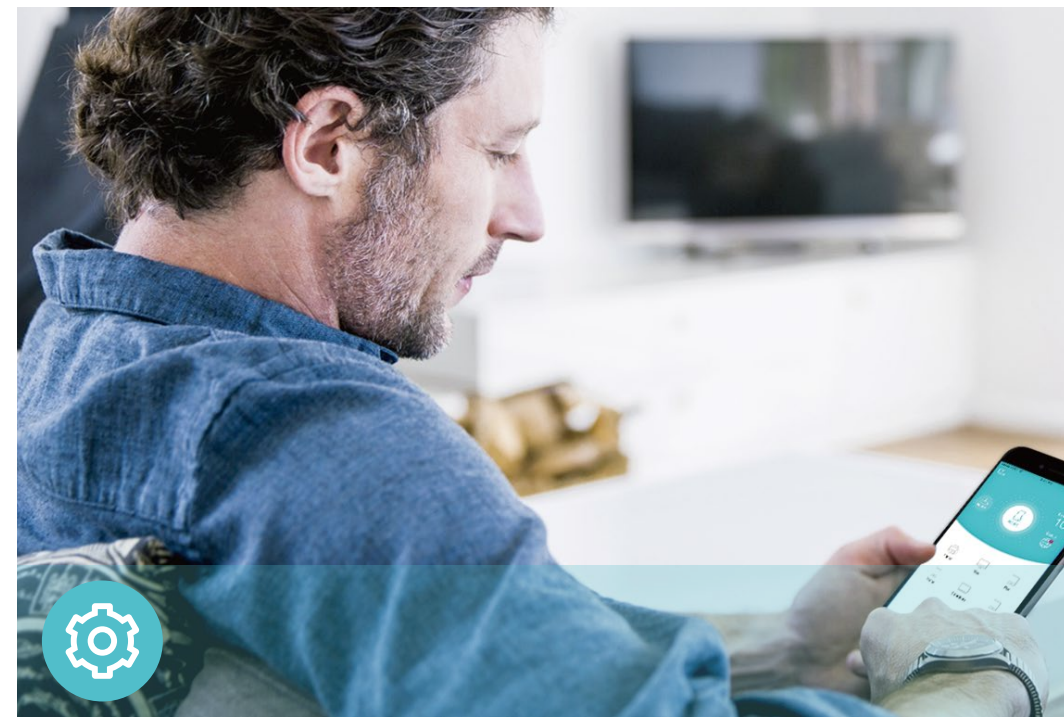
- Access Point Mode: connect Wi-Fi devices to any wired network
- Range Extender Mode: expand an existing router's Wi-Fi coverage
- Client Mode: connect Ethernet devices to a Wi-Fi network

# Features



## Reliability

- **Ultimate Wireless Speed** – Combined wireless speeds up to 300Mbps over 2.4GHz and 433Mbps over 5GHz
- **Support 802.11 ac** – Provides a data transfer rate 3 times faster than 802.11n for each stream
- **Easy Bandwidth Management**– Bandwidth Control allocates necessary speed of each connected device to ensure quality of multimedia streaming



## Ease of Use

- **Intuitive Web UI** – Ensures quick and simple Installation without hassle
- **Fast Encryption** – One-touch WPA wireless security encryption with the WPS button
- **Hassle-free Management with Tether App** – Network management is made easy with the TP-Link Tether App, available on any Android and iOS device
- **USB 2.0 Port for Fast Sharing** – A USB 2.0 port makes it easy to share photos, videos, and music across your home network. Through the router's FTP server, you can also access your files and media from network devices remotely



## Security

- **Guest Network** – Keeps your main network secure by creating a separate network for friends and visitors
- **Access Control** – Establishes a whitelist or blacklist to allow or restrict certain devices to access the internet
- **Parental Controls** – Restricts internet access time and contents for children devices
- **Encryptions for Secure Network** – WPA-PSK and WPA2-PSK encryptions provide active protection against security threats

# Specifications

## Hardware

- Ports: 1 10/100Mbps WAN/LAN Port, 1 USB 2.0 Port, 1 mini USB Port
- Buttons: WPS Button, Reset Button, Mode Switch
- Antennas: Internal Antennas
- External Power Supply: 5V/2A
- Dimensions (W x D x H): 2.9×2.64×0.87 in. (74×67×22mm)



## Wireless

- Wireless Standards: IEEE 802.11ac/n/a 5GHz, IEEE 802.11b/g/n 2.4GHz
- Frequency: 2.4GHz and 5GHz
- Signal Rate: 300Mbps at 2.4GHz, 433Mbps at 5GHz
- Transmit Power: < 20dBm (2.4GHz), <23dBm (5GHz)
- Reception Sensitivity:
  - 2.4GHz:
    - 11g 54M: -76dBm
    - 11n HT20 MCS7: -74dBm
    - 11n HT40 MCS7: -71dBm
  - 5GHz:
    - 11a 54M: -76dBm
    - 11ac VHT20 MCS8: -70dBm
    - 11ac VHT40 MCS9: -65dBm
    - 11ac VHT80 MCS9: -61.5dBm
- Wireless Function: Enable/Disable Wireless Radio, WMM, Wireless Statistics
- Wireless Security: 64/128-bit WEP, WPA/WPA2, WPA-PSK/WPA2-PSK encryptions



# Specifications

## Software

- Quality of Service: WMM, Bandwidth Control
- WAN Type: Dynamic IP/Static IP/PPPoE/PPTP(Dual Access)/L2TP(Dual Access)
- Management: Access Control, Local Management, Remote Management
- DHCP: Server, DHCP Client List, Address Reservation
- Port Forwarding: Virtual Server, Port Triggering, UPnP, DMZ
- Dynamic DNS: DynDns, NO-IP
- Access Control: Parental Controls, Local Management Control, Host List, White List, Black List
- Firewall Security: DoS, SPI Firewall, IP and MAC Address Binding
- Protocols: IPv4, IPv6
- Guest Network: 2.4GHz guest network, 5GHz guest network

## Others

- Certification:  
FCC, CE, RoHS
- System Requirements:  
Microsoft Windows 98SE/NT/2000/XP/Vista™/7/8/8.1/10, MAC OS, NetWare, UNIX or Linux  
  
Internet Explorer 11, Firefox 12.0, Chrome 20.0, Safari 4.0, or other Java-enabled browser
- Environment:  
Operating Temperature: 0°C~40°C (32°F ~104°F)  
Storage Temperature: -40°C~70°C (-40°F ~158°F)  
  
Operating Humidity: 10%~90% non-condensing  
Storage Humidity: 5%~90% non-condensing
- Package Contents  
AC750 Wi-Fi Travel Router TL-WR902AC  
  
Power Supply Unit  
  
Ethernet Cable  
  
USB Cable  
  
Quick Installation Guide  
  
Wi-Fi Info Card



For more information, please visit

<https://www.tp-link.com/products/details/TL-WR902.html>

or scan the QR code left

Attention: This device may only be used indoors in all EU member states and EFTA countries.

Specifications are subject to change without notice. TP-Link is a registered trademark of TP-Link Technologies Co., Ltd. Other brands and product names are trademarks or registered trademarks of their respective holders. Copyright ©2019 TP-Link Technologies Co., Ltd. All rights reserved.

\*Maximum wireless signal rates are the physical rates derived from IEEE Standard 802.11 specifications. Actual wireless data throughput and wireless coverage are not guaranteed and will vary as a result of network conditions, client limitations, and environmental factors, including building materials, obstacles, volume and density of traffic, and client location.

[www.tp-link.com](http://www.tp-link.com)

TP-Link AC750 Wi-Fi Travel Router TL-WR902AC