



# AC2100 Wireless Dual Band Gigabit VoIP VDSL/ADSL Modem Router

11AC Wave2 Wi-Fi to Connect  
Faster on More Devices

VC420-G3v



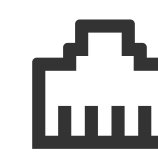
300Mbps+1733Mbps  
Dual Band Wi-Fi



MU-MIMO  
Technology



Beamforming



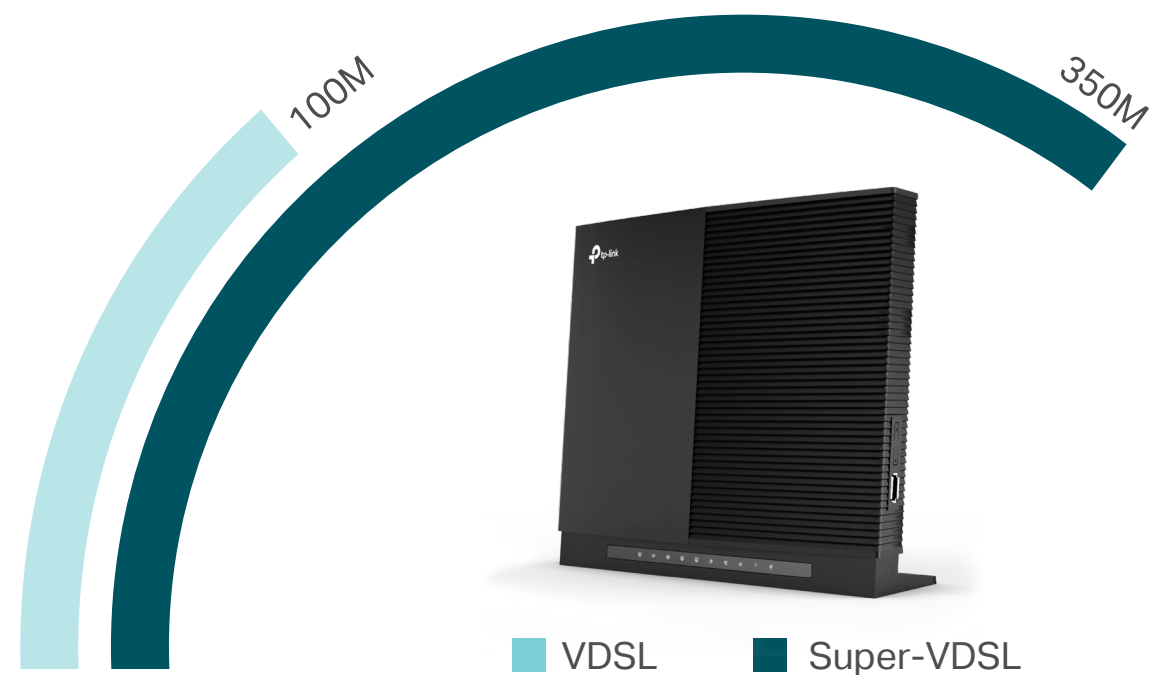
Gigabit  
Ports



# Highlights

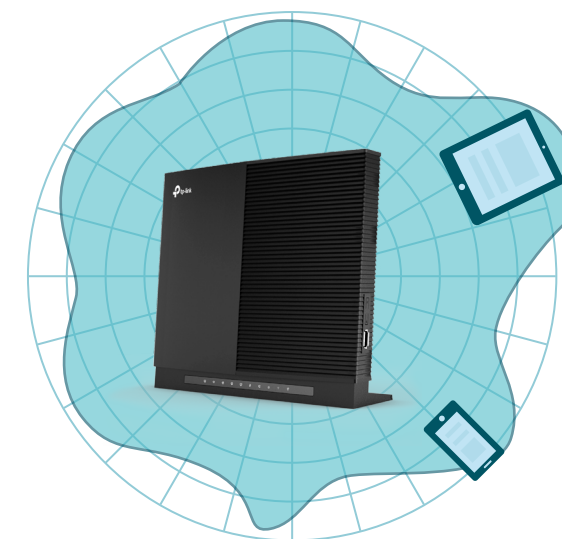
## Super VDSL

The VC420-G3v features Super VDSL (VDSL2 Profile 35b), the latest generation of DSL technology. Downstream is increased by up to 350Mbps, 3.5x faster than its VDSL2 predecessor. G.Vector reduces interference on your DSL line for a more stable data transmission.

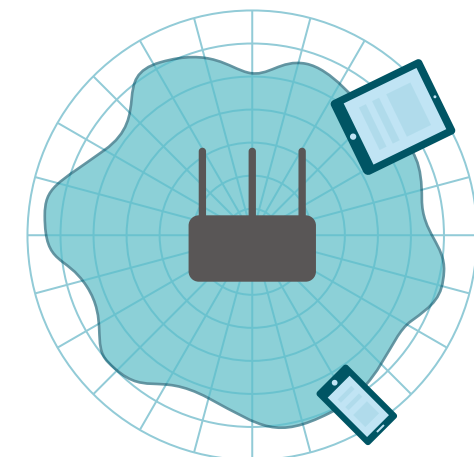


## Beamforming for Better Coverage

Beamforming technology dramatically improves the router's coverage by locating wireless devices to form stronger, more reliable connections, even as mobile devices move from room to room.



VC420-G3v

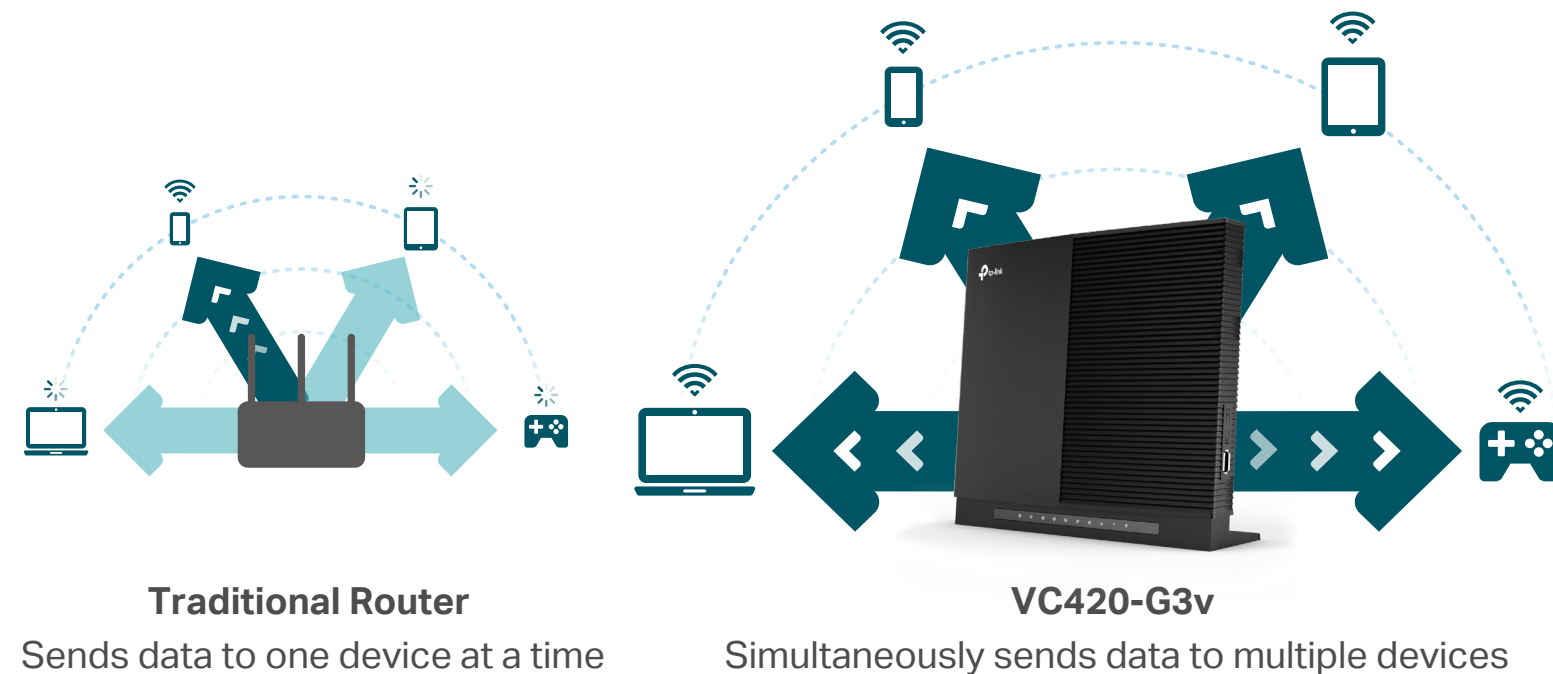


Regular Router

# Highlights

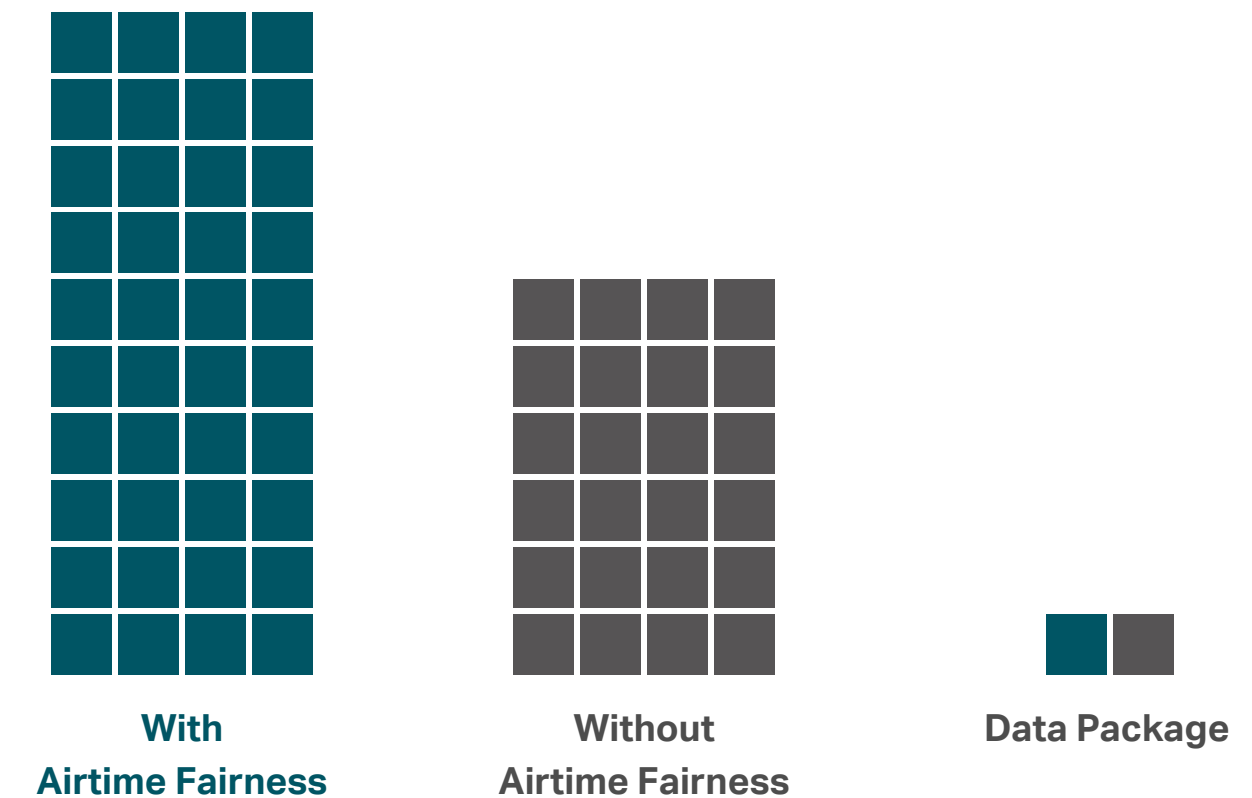
## MU-MIMO: Efficient Wi-Fi for Every Device

MU-MIMO technology serves up to four devices at once, reducing wait time, increasing Wi-Fi throughput for every device, and making each stream more efficient.



## Airtime Fairness for More Efficient Wi-Fi Distribution

With Airtime Fairness, the VC420-G3v equally divides attention between newer and older devices improving overall Wi-Fi performance and reliability without letting older devices limit your network.



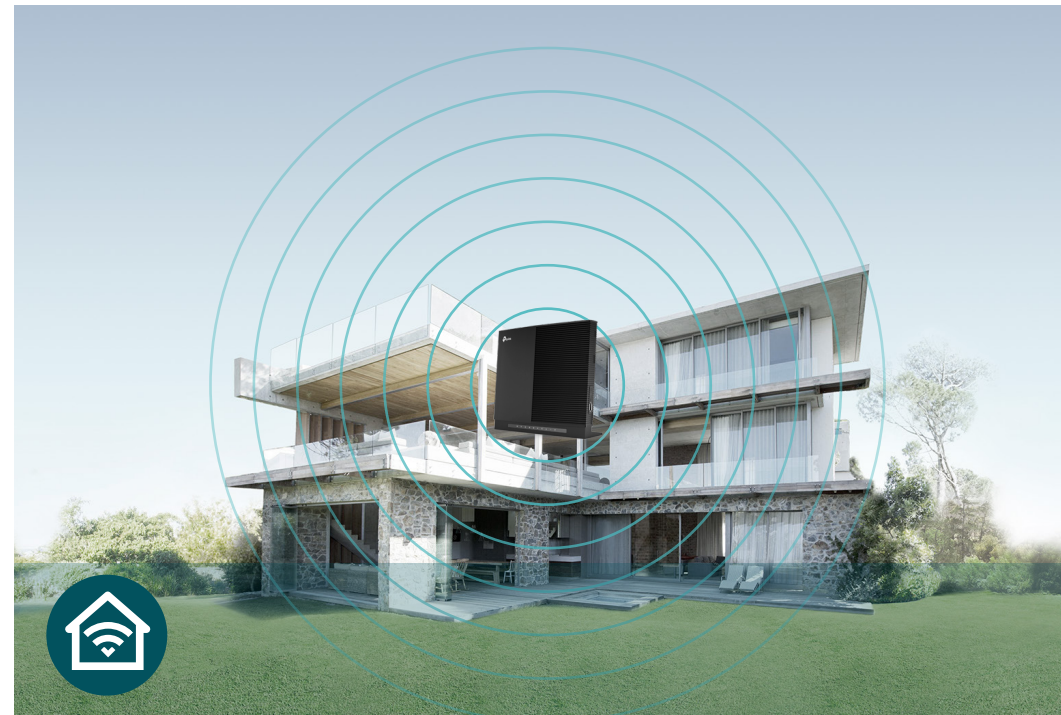


# Features



## Speed

- Ultimate Wireless Speed – Combined wireless speeds of up to 300 Mbps (over 2.4GHz) and 1733 Mbps (over 5GHz)
- 256QAM Technology – Uses 256QAM modulation scheme for higher data throughput, boosting wireless speeds by up to 33%
- MU-MIMO Technology – Simultaneously exchange data with several devices, achieving speeds which are 4x faster than standard AC routers
- 802.11 ac – Provides a data transfer rate 3 times faster than 802.11n for each stream



## Wi-Fi Range

- Optimal Range Wi-Fi – High-performance antennas ensure widespread Wi-Fi coverage and a stable connection
- Wi-Fi with Beamforming - Beamforming technology locates the connected devices and further improves the VC420-G3v's range and the signal strength to each mobile device, delivering a more reliable and efficient wireless connection

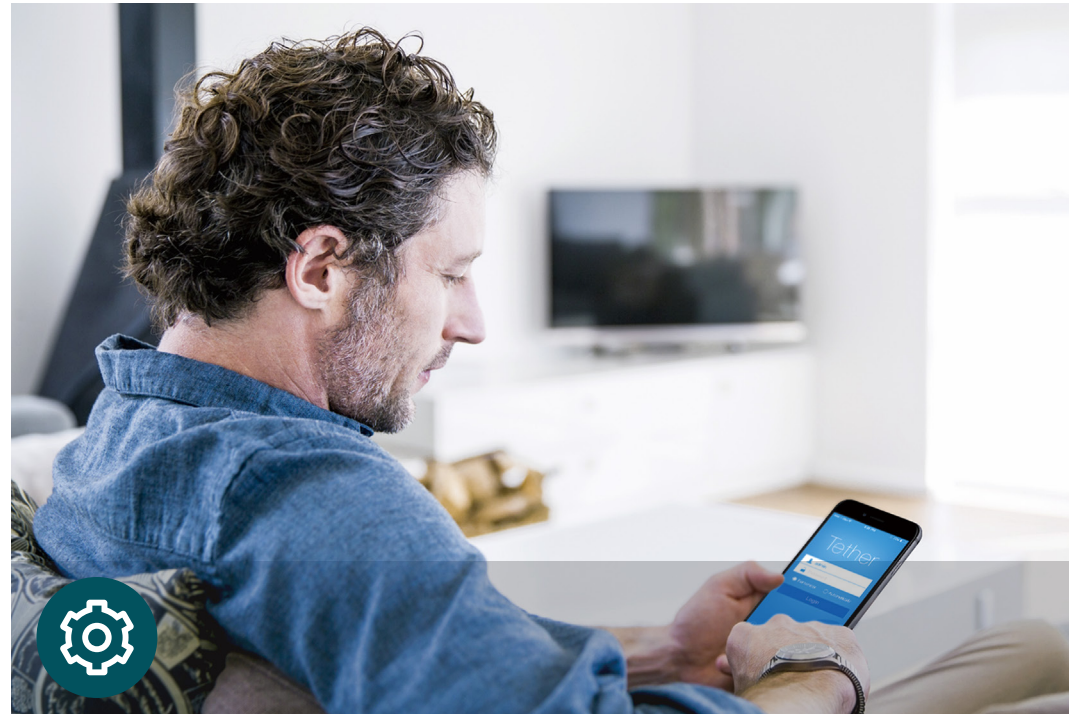


## Reliability

- Simultaneous Dual Band – Separate Wi-Fi bands enable more devices to connect to your network without a drop in performance
- Bandwidth Management – Bandwidth Control makes it easier for you to manage the bandwidth of connected devices
- Airtime Fairness – Balances bandwidth to improve overall throughput



# Features



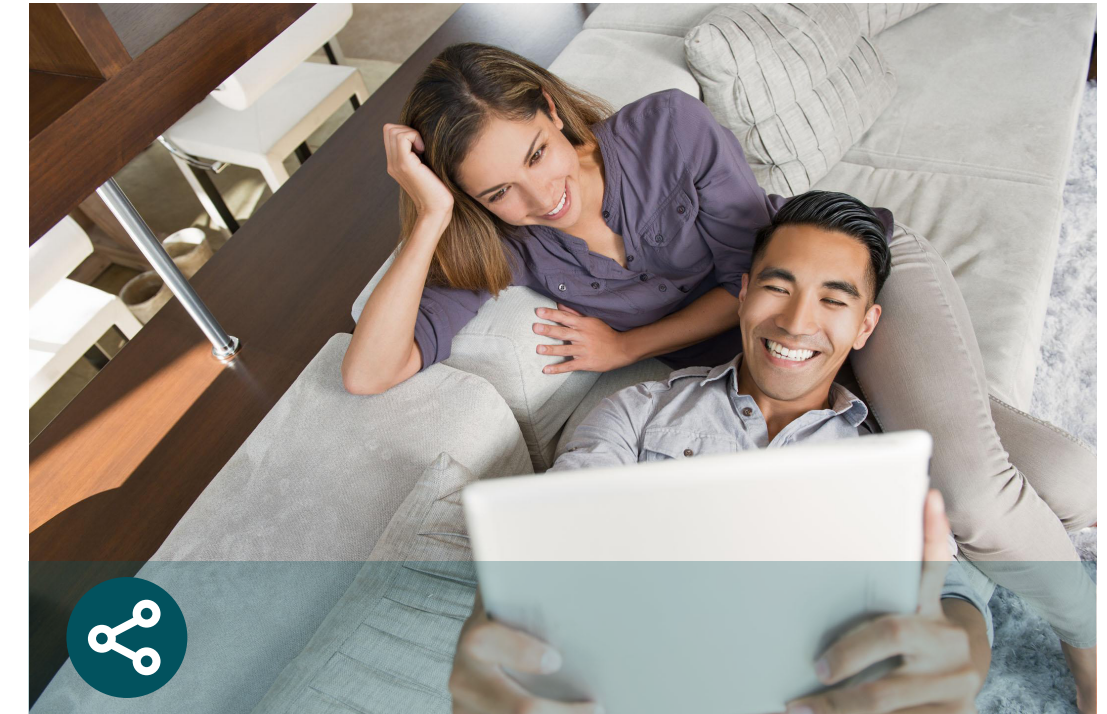
## Ease of Use

- Intuitive Web UI – Ensures quick and simple installation without hassle
- Fast Encryption – Connect wireless devices securely with the press of WPS button
- Easy On/Off – Turn On/Off power and wireless radio separately using the Power On/Off and Wi-Fi On/Off buttons
- Web UI Upgrade – Update firmware on the web UI



## Security

- Multi-SSID – Provides different wireless access for different applications and services
- Access Control – Establish a whitelist or blacklist to allow or block certain devices from accessing the internet
- Parental Control – Manage when and how connected devices can access the internet
- VPN Server – Support PPTP VPN and OpenVPN, easily set up a secure connection between your private networks to the internet
- Encryptions for Secure Network – WPA-PSK/WPA2-PSK encryptions provide active protection against security threats



## Easy Sharing

- USB Port – With USB 3.0 port, you can access and share your files and media locally. Via the router's FTP server, you can also access your files and media from networks devices remotely
- 10x Faster Transfer Speed – The USB 3.0 port provides up to 10x faster USB hard drive access than previous generation USB 2.0 connections
- Built-in Media Server – Allows users to play music, video and view photos

# Specifications

## Hardware

- Interface: 4 10/100/1000Mbps RJ45 LAN Ports, 1 10/100/1000Mbps RJ45 WAN Port, 1 VDSL2 Port, 2 Phone Ports, 1 USB 2.0 Port, 1 USB 3.0 Port
- Button: Power On/Off button, Reset Button, WPS Button, Wi-Fi Button
- External Power Supply: 12V / 2.5A
- Dimensions (W x D x H): 9.5×7.9×3.2in (241.6×201.3×82.5mm)
- IEEE Standards: IEEE 802.3, IEEE 802.3u, 802.3ab
- VDSL2 Standards: ITU G.993.2, Up to 35b profile  
ITU-T G.993.5 (G.vector)  
ITU-T G.998.4 (G.INP)
- ADSL Standards: Full-rate ANSI T1.413 Issue 2,  
ITU-T G.992.1(G.DMT),  
ITU-T G.992.2(G.Lite),  
ITU-T G.994.1 (G.hs),  
ITU-T G.995.1
- ADSL2 Standards: ITU-T G.992.3 (G.DMT.bis)  
ITU-T G.992.4 (G.lite.bis)
- ADSL2+ Standards: ITU-T G.992.5
- Antenna Type: Internal antennas

## Wireless

- Wireless Standards: IEEE 802.11ac/n/a 5GHz, IEEE 802.11b/g/n 2.4GHz
- Frequency: 2.4GHz and 5GHz
- Signal Rate: 1733Mbps at 5GHz, 300Mbps at 2.4GHz
- Transmit Power: CE: <20dBm (2.4GHz), <23dBm (5GHz Band1),  
FCC: <30dBm(2.4GHz,5GHz Band1)
- Wireless Function: Enable/Disable Wireless Radio, WMM,  
Wireless Statistics, Airtime Fairness
- Wireless Security: 64/128-bit WEP, WPA/WPA2,  
WPA-PSK/WPA2-PSK encryptions
- Wireless Schedule: Support 2.4GHz and 5GHz Wireless  
Schedule



# Specifications

## Software

- DHCP: Server, Client, DHCP Client List, Address Reservation, DHCP Relay
- Quality of Service: ATM QoS, Hardware QoS
- Port Forwarding: Virtual Server, Port Triggering, DMZ, ALG, UPnP
- Dynamic DNS: DynDns, NO-IP
- VPN: OpenVPN, PPTP VPN, IPSec VPN
- ATM/PPP Protocols: ATM Forum UNI3.1/4.0, PPP over ATM, PPP over Ethernet, IPoA, IPoE, Bridge, PVC – Up to 8 PVCs
- Security: SPI Firewall, Access Control, Service Filtering, DoS Protection, ICMP-Flood Protection, UDP-Flood Protection, TCP-SYN-Flood Protection, IP and MAC Address Binding
- Advanced Functions: Parental Controls, Network Address Translation(NAT), Port Mapping (Grouping), Static Routing, RIP v1/v2, DNS Relay, DNS proxy, IGMP V1/V2/V3
- USB Sharing: Support Samba (Storage) / FTP Server / Media Server, 3G/4G Modem
- Management: Web Based Configuration (HTTP / HTTPS ), Remote management, Command Line Interface, SSL for TR-069, SNMP v1/2c, Firmware Upgrade, Diagnostic Tools
- Multi-SSID: Support 2.4GHz & 5GHz multi-SSID
- IPSec VPN: Support up to 10 IPSec VPN tunnels
- Protocols: Support IPv4 and IPv6

## Others

- Package Contents  
AC2100 Wireless Gigabit VoIP VDSL/ADSL Modem Router  
Power Supply Unit  
External Splitter  
RJ11 Phone Cable  
RJ45 Ethernet Cable  
Quick Installation Guide
- Certification  
CE, FCC
- System Requirements  
Microsoft Windows 98SE, NT, 2000, XP, Vista™ or Windows 7, 8, 8.1, 10, MAC OS, NetWare, UNIX or Linux  
Internet Explorer 11, Firefox 12.0, Chrome 20.0, Safari 4.0 browsers or higher, or other Java-enabled browsers
- Environment  
Operating Temperature: 0°C~40°C (32°F ~104°F)  
Storage Temperature: -40°C~70°C (-40°F ~158°F)  
Operating Humidity: 10%~90% non-condensing  
Storage Humidity: 5%~90% non-condensing