



# CRM Point™

Model: CRM-P

Advanced Device Management

Plug and Play Installation

Breakthrough Size and Performance



# Overview

Ubiquiti Networks introduces the CRM Point™, a compact, locally hosted solution for management of your airMAX® and airMAX ac network devices from a central point.

- Plug and play
- Breakthrough size and performance
- Powerful quad-core architecture
- Versatile scalability
- No hosting fees

## Plug and Play Installation

Instant setup – just connect the CRM Point to 802.3af PoE and run the U CRM Control™ setup wizard.

## Breakthrough Size and Performance

Pocket-sized for a minimal footprint, the CRM Point can easily be plugged into any switch or router on your network.

## Powerful Quad-Core Architecture

Featuring a quad-core processor, the CRM Point provides top-level processing power for centralized device management.

## Versatile Scalability

The CRM Point scales to host networks of almost any size to meet your growing management needs.

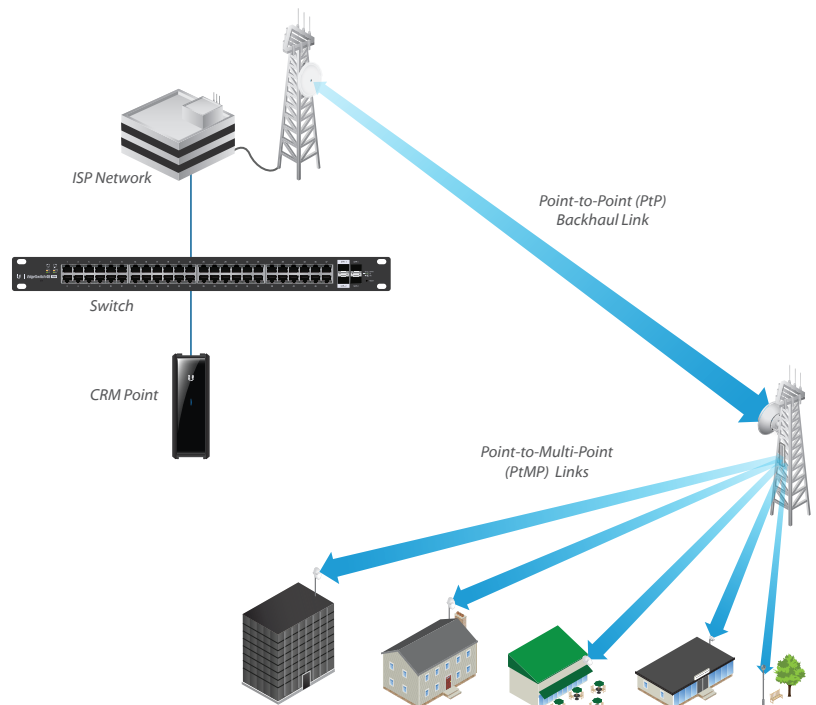
## No Hosting Fees

The U CRM Control software and all of its data are stored locally on the CRM Point, eliminating the costs associated with third-party cloud storage.



*CRM Point Deployed with 802.3af Ethernet Switch*

*Minimal footprint and simple plug and play deployment with an 802.3 PoE switch.*



*Example of CRM Point Deployment*

*Install the CRM Point anywhere in the network to discover and manage all your network devices.*

# Software

## U CRM Control™

The U CRM Control software comes pre-installed on the CRM Point for immediate deployment. The software provides an intuitive user interface with powerful features for advanced network and device management.

Using the U CRM Control software, you can now manage groups of airMAX and airMAX ac devices from anywhere in the network.

### Device Discovery

U CRM Control lets you quickly discover all airMAX and airMAX ac devices within your network. In addition to automatic device discovery, you can also scan IP ranges or manually add devices using their IP addresses.

### Network Monitoring

Check the system dashboard to display a summary of the current network status and to get real-time updates on the network status. The dashboard shows the PtP and PtMP networks. For each network type, you can display the spectral efficiency, airtime, and radio distribution for all applicable frequency bands. Real-time graphs also display throughput or airtime statistics.

### Device Views

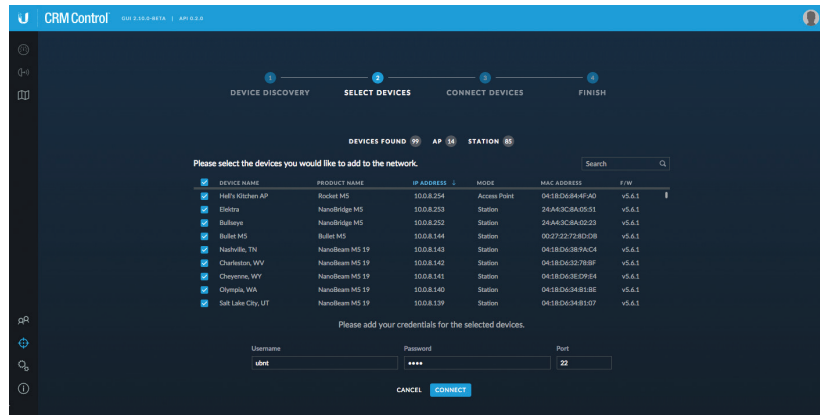
Track network performance with summary and detailed device views. Monitor uplink and downlink statistics, including charts of wireless signal quality and device activity. Search for a specific device or use filters to quickly find the devices you're looking for.

### Batch Firmware Upgrades

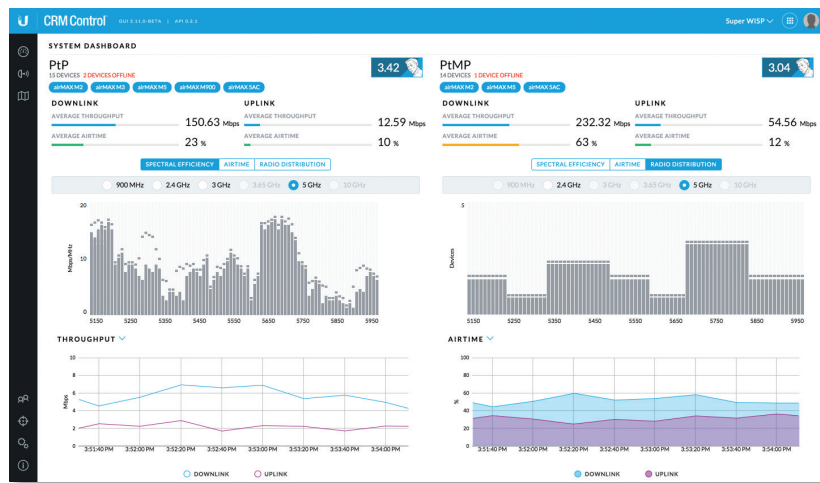
The U CRM Control software allows you to upgrade firmware simultaneously on multiple airMAX and airMAX ac devices, saving you valuable time.

### Link Simulations

The powerful link simulator helps you to plan your deployments. Create a point-to-point simulation anywhere on the map and test the link performance with immediate feedback based on terrain data and device configuration.



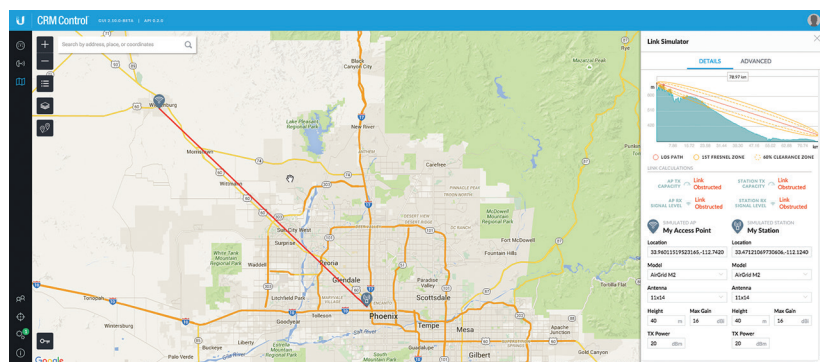
Device Discovery



System Dashboard for Real-Time Network Monitoring



Device View



Link Simulation

# CRM-P Specifications

Physical / Electrical / Environmental	
Dimensions	21.7 x 43.4 x 121.9 mm (0.85 x 1.71 x 4.80")
Weight	110 g (3.88 oz)
Max. Power Consumption	5W
Power Method	
PoE	48V 802.3af or Passive PoE (Pairs 4, 5+; 7, 8 Return)
Micro-USB	5V
Power Supply	802.3af PoE or Micro-USB 5V, 1A
Operating Temperature	0 to 40° C (32 to 104° F)
Operating Humidity	20 to 90% Noncondensing

System Information	
Processor	Qual-Core SoC
System Memory	2 GB DDR3
Ports	
Networking Interface	(1) 10/100/1000 RJ45 Port
Memory Interface	(1) microSD Port
Button	Reset
LED	Factory Defaults/Device Busy/Device Working

Regulatory / Compliance Information	
Certifications	CE, FCC, IC

Specifications are subject to change. Ubiquiti products are sold with a limited warranty described at: [www.ubnt.com/support/warranty](http://www.ubnt.com/support/warranty)  
 ©2015 Ubiquiti Networks, Inc. All rights reserved. Ubiquiti, Ubiquiti Networks, the Ubiquiti U logo, the Ubiquiti beam logo, airMAX, airOS, CRM Point, and U CRM Control are trademarks or registered trademarks of Ubiquiti Networks, Inc. in the United States and in other countries. All other trademarks are the property of their respective owners.



[www.ubnt.com](http://www.ubnt.com)

AI100815