

UniFi[®] XG GATEWAY

Gateway Router with
Eight 10G SFP+ and One 1G RJ45

Model: USG-XG-8

Sophisticated Routing Features

Hot-Swappable Modular Power Supplies

Built-In Full Color LCD Touch Display



UniFi® XG GATEWAY

Build your high-performance network with the UniFi® Security Gateway XG. Combining robust security features and advanced routing technology, the Security Gateway XG delivers unprecedented network security and throughput in a cost-effective unit.

High-Capacity Performance

Featuring 10G SFP+ interfaces, the Security Gateway XG supports up to 20,000 clients for enterprise-level businesses, stadiums, hotels, and large-scale deployments.

Powerful Firewall Performance

The UniFi Security Gateway XG offers advanced firewall policies to protect your network and its data.

Unified Network Analytics and Visibility

From a single pane of glass, view network topology and configuration, real-time switch statistics, and debugging metrics.

LCD Touchscreen Display

The built-in touchscreen display on the USG-XG-8 provides administrators with real-time device and network monitoring without the need for a separate UI device.

Convenient VLAN Support

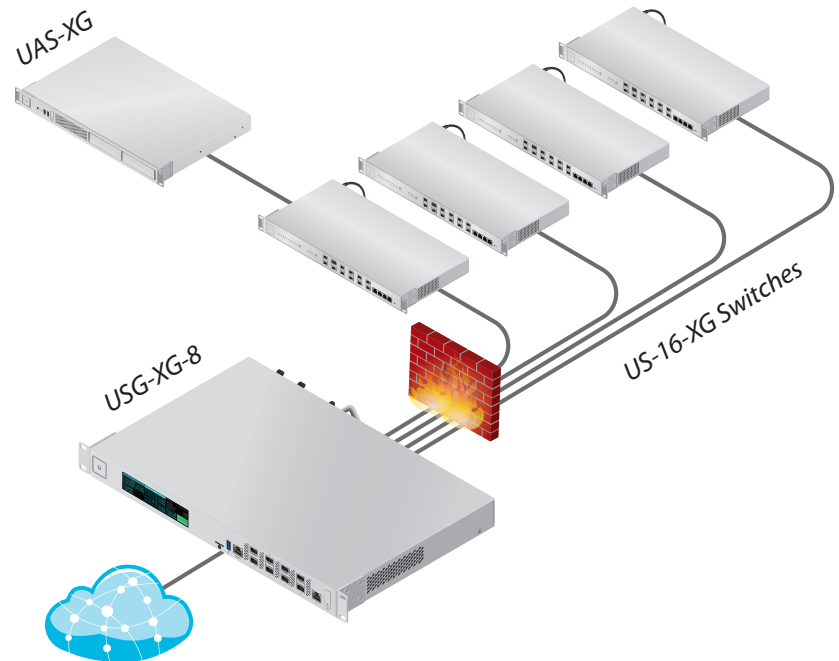
The UniFi Security Gateway XG can create virtual network segments for security and network traffic management.

VPN Server for Secure Communications

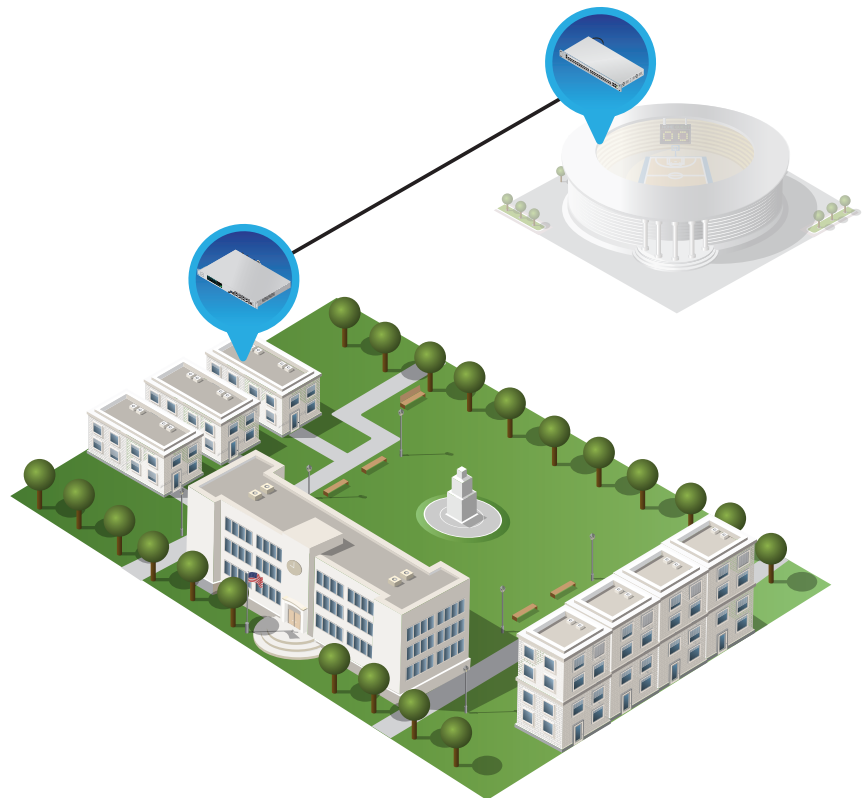
A site-to-site VPN secures and encrypts private data communications traveling over the internet.

Automatic QoS

Top QoS priority is assigned to voice and video traffic for clear calls and lag-free, video streaming.



The USG-XG-8 connects to multiple US-16-XG devices.



The USG-XG-8 in a campus data center feeds a stadium over a 10G fiber connection.

UniFi Controller

Easily accessible through any standard web browser and the UniFi mobile app (iOS or Android), the UniFi Controller software features an intuitive UI and support for the next generation of UniFi devices. Important network details are logically organized for a simplified, yet powerful, interface.

Packed with Features

Use the UniFi Controller to provision thousands of UniFi APs and UniFi Security Gateways, map out networks, quickly manage system traffic, and provision additional UniFi devices.

Network Overview

A comprehensive overview of your Network Health is readily available in the new dashboard. Monitor your network's vitals and make on-the-fly adjustments as needed.

Predictive Maps

Upload a map of your location(s) or use Google Maps to represent the areas where your UniFi devices are located. Starting with v5.6, you can also use the predictive map feature to get a preview of coverage, and to help you avoid dead spots.

Deep Packet Inspection

Ubiquiti's proprietary Deep Packet Inspection (DPI) engine includes the latest application identification signatures to track which applications (and IP addresses) are using the most bandwidth.

Detailed Analytics

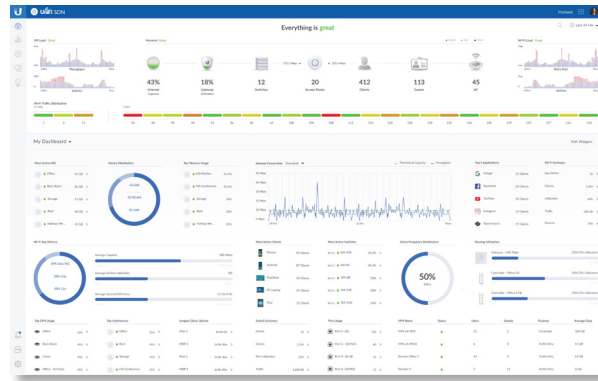
Use the configurable reporting and analytics to monitor large user groups and expedite troubleshooting. Advanced search and sorting capabilities make network management more efficient.

Multi-Site Management

A single UniFi Controller running in the cloud can manage multiple sites: multiple, distributed deployments and multi-tenancy for managed service providers. Each site is logically separated and has its own configuration, maps, statistics, guest portal, and administrator read/write and read-only accounts.

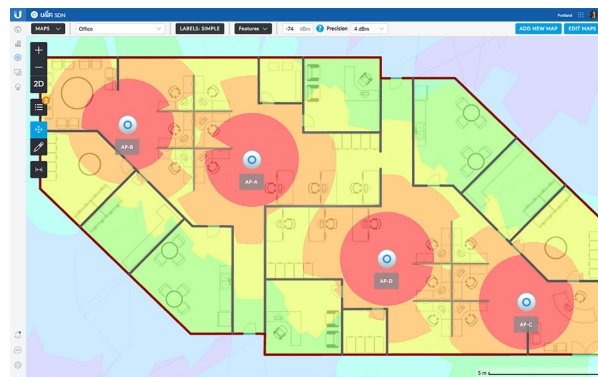
LAN/WLAN Groups

The UniFi Controller can manage flexible configurations of large deployments. Create multiple LAN and WLAN groups and assign them to the respective UniFi devices.



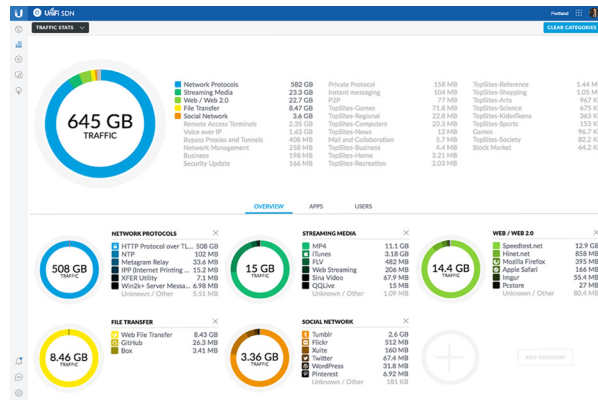
Dashboard

UniFi provides a visual representation of your network's status and delivers summary information about various device categories, network traffic, and client activity.



Maps

Monitor UniFi devices and analyze the surrounding RF environment.



Traffic Statistics

UniFi visualizes network traffic in clear and easy-to-read graphs.



UniFi Mobile App

Manage your UniFi devices from your smartphone or tablet.

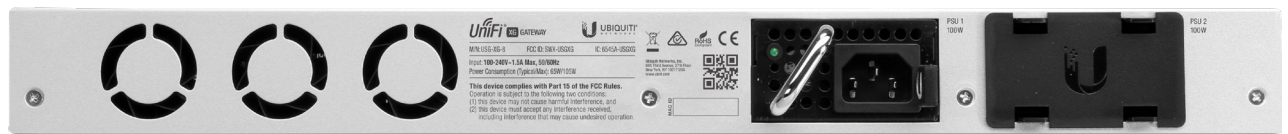
UniFi® XG GATEWAY

Hardware Overview

- (8) 10G SFP+ Ethernet Ports
- (1) Gigabit RJ45 Ethernet Port
- (2) Hot-Swappable Modular PSU Bays
- (1) 100W AC/DC Modular PSU
- Built-In Touchscreen Display
- 1U Rack-Mountable
- Real-Time Intrusion Protection at over 1 Gbps Throughput
- 50 Gbps Routing Capability with Deep Packet Inspection



Front Panel

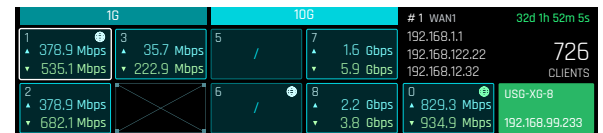


Back Panel

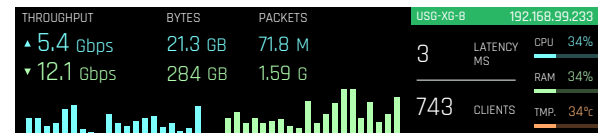
Built-In Touchscreen

The USG-XG-8 features a vivid built-in touchscreen display, to make managing your network even easier. The LCD touchscreen conveniently displays two different screens: the port display and the statistics display.

The default port display shows information such as IP addresses, throughput speeds, and number of clients, per port. The statistics display presents an overview of total throughput speeds and system details.



Port Screen



Statistics Screen

Power Versatility

Hot-swappable modular PSUs provide options for backup, redundancy, and DC power capability. The UniFi Security Gateway XG includes one AC/DC 100W power supply.

If the USG-XG-8 detects failure of the primary PSU, then the backup automatically activates to supply uninterrupted power.

The AC/DC module is sold separately as model RPS-AC-100W. You also have the option to use a DC/DC PowerModule™, model RPS-DC-100W (sold separately).



Specifications

USG-XG-8	
Dimensions	442.4 x 285.6 x 43.7 mm (17.42 x 11.24 x 1.72")
Weight	
With Mount Brackets	4.44 kg (9.79 lb)
Without Mount Brackets	4.54 kg (10.01 lb)
Max. Power Consumption	AC/DC 100W
Power Method	100-240 VAC, 50-60 Hz Universal Input
Power Supply	(2) Hot-Swappable AC/DC or DC/DC 100W PSU (1 AC/DC PSU Included)
Supported Voltage Range	100 to 240 VAC
LCD	4.7" Wide-Viewing Angle True Color TFT-LCD Touch Screen
System LED	Status
On-Board Flash Storage	8 MB NOR Flash 4 GB eMMC NAND Flash
Interfaces	
Networking	(8) 10 Gbps SFP+ Ports (1) 1 Gbps RJ45 Ethernet Port
Management	(1) RJ45 Ethernet In-Band (1) RJ45 Serial Out-of-Band
IPS Throughput	1 Gbps
Processor	MIPS64 16-Core, 1.8 GHz
System Memory	16 GB DDR4 RAM
Rack-Mount	Yes, 1U
ESD/EMP Protection	Air/Contact: ±24 KV
Operating Temperature	-5 to 40° C (23 to 104° F)
Operating Humidity	5 to 95% Noncondensing
Certifications	CE, FCC, IC



Specifications are subject to change. Ubiquiti products are sold with a limited warranty described at: www.ubnt.com/support/warranty
 ©2018 Ubiquiti Networks, Inc. All rights reserved. Ubiquiti, Ubiquiti Networks, the Ubiquiti U logo, the Ubiquiti beam logo, UniFi, and PowerModule are trademarks or registered trademarks of Ubiquiti Networks, Inc. in the United States and in other countries. Apple and the Apple logo are trademarks of Apple Inc., registered in the U.S. and other countries. App Store is a service mark of Apple Inc. Google, Google Play, the Google Play logo and other marks are trademarks of Google Inc. All other trademarks are the property of their respective owners.


www.ubnt.com

SICE DISTRIBUTORE UFFICIALE: www.sicetelecom.it